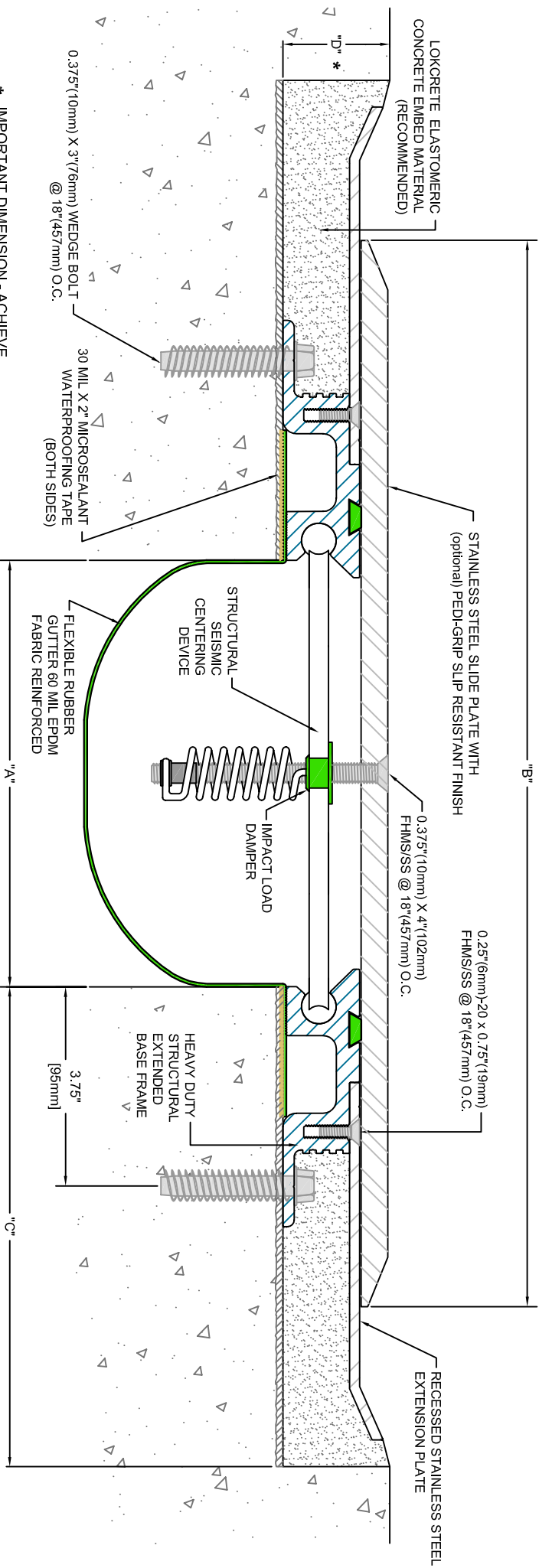


| Model Number | Total Movement | Joint Opening "A" |              |        |              |     | Slide Plate Thickness | Slide Plate "B" | Blockout Width "C" | Blockout Depth "D" | Centering Bar Length |    |             |     |            |     |              |    |             |     |
|--------------|----------------|-------------------|--------------|--------|--------------|-----|-----------------------|-----------------|--------------------|--------------------|----------------------|----|-------------|-----|------------|-----|--------------|----|-------------|-----|
|              |                | Seismic Min.      | Thermal Min. | Normal | Seismic Max. |     |                       |                 |                    |                    |                      |    |             |     |            |     |              |    |             |     |
| SSS-1000 EHD | <b>14.0</b>    | 356               | <b>1.00</b>  | 25     | <b>5.0</b>   | 127 | <b>10.0</b>           | 254             | <b>15.0</b>        | 381                | <b>0.375</b>         | 10 | <b>17.0</b> | 432 | <b>7.5</b> | 191 | <b>1.875</b> | 48 | <b>20.0</b> | 508 |
| SSS-1200 EHD | <b>17.0</b>    | 432               | <b>1.00</b>  | 25     | <b>6.0</b>   | 152 | <b>12.0</b>           | 305             | <b>18.0</b>        | 457                | <b>0.500</b>         | 13 | <b>20.0</b> | 508 | <b>8.5</b> | 216 | <b>2.000</b> | 51 | <b>23.0</b> | 584 |

Dimension shown in **inches** (bold) and millimeters.  
Contact MM Systems for larger size systems.



\* IMPORTANT DIMENSION - ACHIEVE REQUIRED DEPTH BY EXACT FORMING, GRINDING, MILLING OR STRUCTURAL LEVELING BED

## SLAB-TO-SLAB



**MM**  
MM SYSTEMS

50 MM WAY  
PENDERGRASS, GA. 30567  
PHONE: 706-824-7500

866-50 MM WAY  
866-506-6929  
FAX: 706-824-7501

[www.mmsystemscorp.com](http://www.mmsystemscorp.com)

For Spec-Data, Installation Guides, or movement requirements, contact MMSC

### RIGHTS OF DESIGN

All rights of design, detail, engineering and/or invention contained herein are the property of MM Systems Corporation and hereby reserved and are not to be reproduced or provided to any other party. MM Systems Corporation reserves the right to amend or withdraw any information contained herein without notice and will not be liable for any inaccuracy or ambiguity of said information.

### MM Stainless Steel Seismic Slide Plate System SSS-1000 & 1200 EHD Series

Drawn by: DMW  
Scale: NTS  
SHT. 1 OF 1  
Issue Date: 03-09-2011

Drawing Number:

**31350-03**