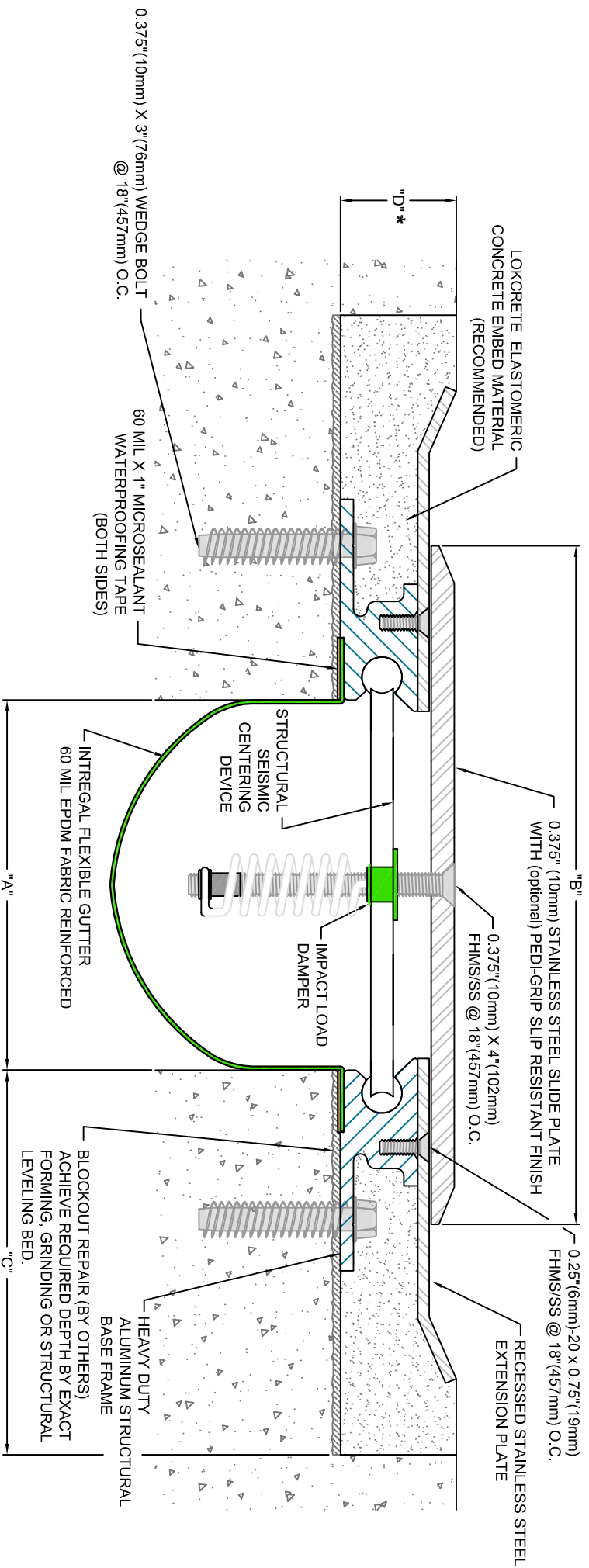


Model Number	Total Movement	Joint Opening "A"					Slide Plate Thickness	Slide Plate "B"	Blockout Width "C"	Blockout Depth "D"	Centering Bar Length								
		Seismic Min.	Thermal Min.	Nominal	Seismic Max.	Seismic Min.													
SSS-400	5.0	127	1.00	2.0	4.0	102	6.0	152	229	0.375	10	8.0	203	4.5	114	1.875	48	11.0	279
SSS-600	8.0	203	1.00	2.5	3.0	76	6.0	152	229	0.375	10	11.0	279	5.5	140	1.875	48	14.0	356
SSS-800	11.0	279	1.00	2.5	4.0	102	8.0	203	305	0.375	10	14.0	356	6.5	165	1.875	48	17.0	432

Dimension shown in inches. (bold) and millimeters.
Contact MM Systems for larger size systems.



* IMPORTANT DIMENSION - ACHIEVE REQUIRED DEPTH BY EXACT FORMING, GRINDING, MILLING OR STRUCTURAL LEVELING BED

SLAB-TO-SLAB



MM
MM SYSTEMS

50 MM WAY
PENDERGRASS, GA. 30567
PHONE: 706-824-7500
866-50 MM WAY
866-506-6929
FAX: 706-824-7501

www.mmsystemscorp.com

For Spec-Data, Installation Guides, or movement requirements, contact MMSVC

RIGHTS OF DESIGN

All rights of design, detail, engineering and/or invention contained herein are the property of MM Systems Corporation and hereby reserved and are not to be reproduced or provided to any other party. MM Systems Corporation reserves the right to amend or withdraw any information contained herein without notice and will not be liable for any inaccuracy or ambiguity of said information.

MM Stainless Steel Seismic Slide Plate System

SSS-400, 600 & 800 Series

Drawn by: DMW

SHT. 1 OF 1

Scale: NTS

Issue Date: 03-09-2011

Drawing Number:

31350-01