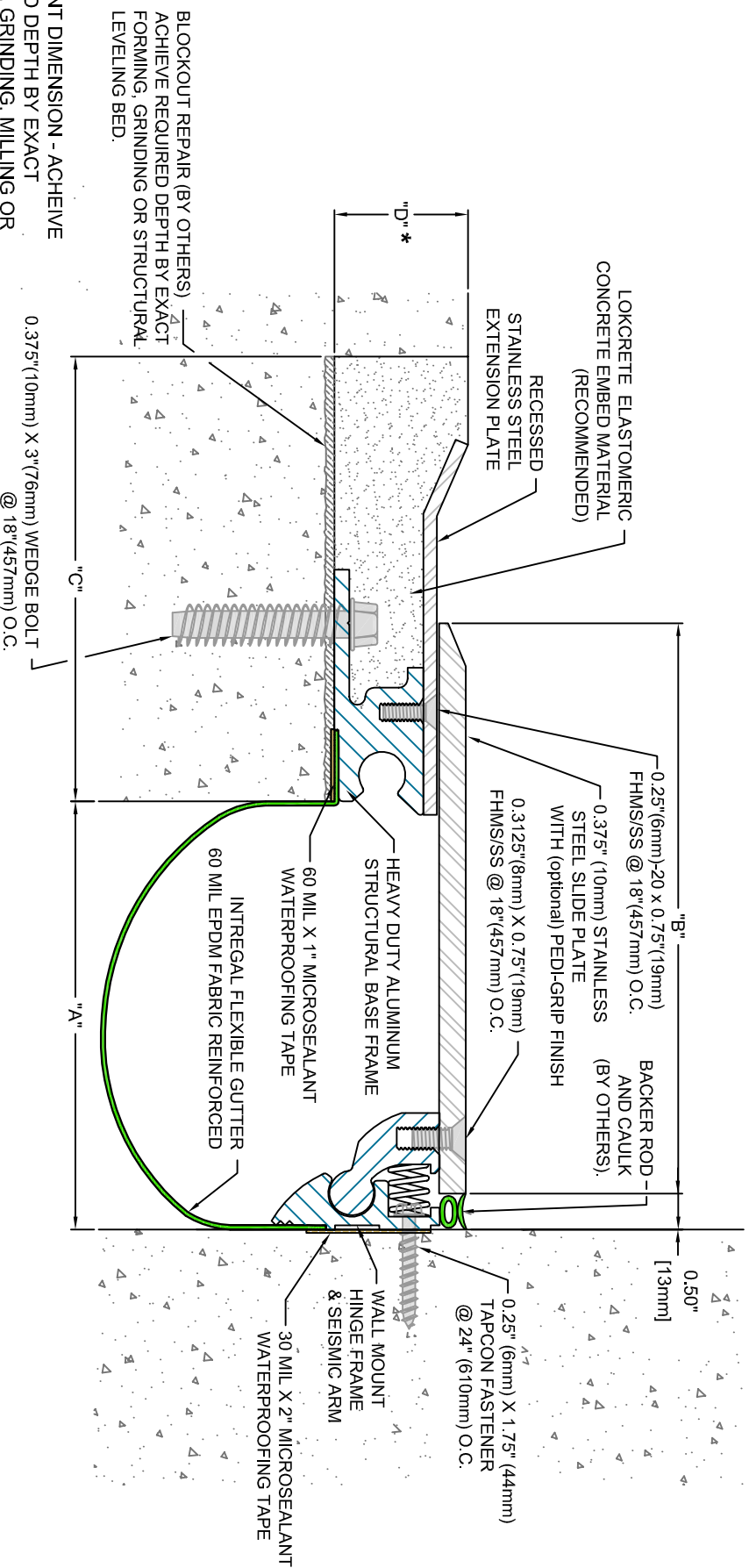


Model Number	Total Movement	Joint Opening "A"						Slide Plate Thickness	Slide Plate "B"	Blockout Width "C"	Blockout Depth "D"							
		Seismic Min.	Thermal Min.	Normal	Seismic Max.	Thermal Max.	Seismic											
SSS-C-400	3.25	83	1.75	4.4	3.0	76	4.0	102	5.0	127	0.375	10	5.5	140	4.5	114	1.875	48
SSS-C-600	5.75	146	1.75	4.4	4.5	114	4.0	152	7.5	191	0.375	10	8.0	203	5.5	140	1.875	48
SSS-C-800	8.25	210	1.75	4.4	6.0	152	8.0	203	10.0	254	0.375	10	10.5	267	6.5	165	1.875	48

Dimension shown in inches (bold) and millimeters.
Contact MMI Systems for larger size systems.



* IMPORTANT DIMENSION - ACHIEVE REQUIRED DEPTH BY EXACT FORMING, GRINDING, MILLING OR STRUCTURAL LEVELING BED

SLAB-TO-WALL



MMI
SYSTEMS

50 MM WAY
PENDERGRASS, GA. 30567
PHONE: 706-824-7500
866-50 MM WAY
866-506-6929
FAX: 706-824-7501

www.mmsystemscorp.com

For Spec-Data, Installation Guides, or movement requirements, contact MMSC

RIGHTS OF DESIGN

All rights of design, detail, engineering and/or invention contained herein are the property of MMI Systems Corporation and hereby reserved and are not to be reproduced or provided to any other party. MMI Systems Corporation reserves the right to amend or withdraw any information contained herein without notice and will not be liable for any inaccuracy or ambiguity of said information.

MMI Stainless Steel Seismic Slide Plate System

SSS-C-400, 600 & 800 Series

Drawn by: DMW

Scale: NTS

Drawing Number:

SHT. 1 OF 1

Issue Date: 03-09-2011

31350-02