

Model Number	Nominal (JO <sub>N</sub> )		Nominal (SL <sub>N</sub> )		Thermal Movement (JO <sub>T</sub> )				Seismic Movement (JO <sub>S</sub> )				Total (JO <sub>A</sub> )		Slide Plate Thickness (ST)	
	Minimum	Maximum	Minimum	Maximum	Minimum	Maximum	Minimum	Maximum	Minimum	Maximum	Minimum	Maximum	Minimum	Maximum	Minimum	Maximum
SSD-400	<b>4.00</b>	102	<b>8.00</b>	203	<b>2.00</b>	51	<b>6.00</b>	152	<b>1.33</b>	34	<b>6.00</b>	152	<b>4.67</b>	119	<b>0.375</b>	10
SSD-500	<b>5.00</b>	127	<b>11.00</b>	279	<b>2.50</b>	64	<b>7.50</b>	191	<b>1.67</b>	42	<b>7.50</b>	191	<b>5.83</b>	148	<b>0.375</b>	10
SSD-600	<b>6.00</b>	152	<b>11.00</b>	279	<b>3.00</b>	76	<b>9.00</b>	229	<b>2.00</b>	51	<b>9.00</b>	229	<b>7.00</b>	178	<b>0.375</b>	10
SSD-700	<b>7.00</b>	178	<b>14.00</b>	356	<b>3.50</b>	89	<b>10.50</b>	267	<b>2.33</b>	59	<b>10.50</b>	267	<b>8.17</b>	208	<b>0.375</b>	10

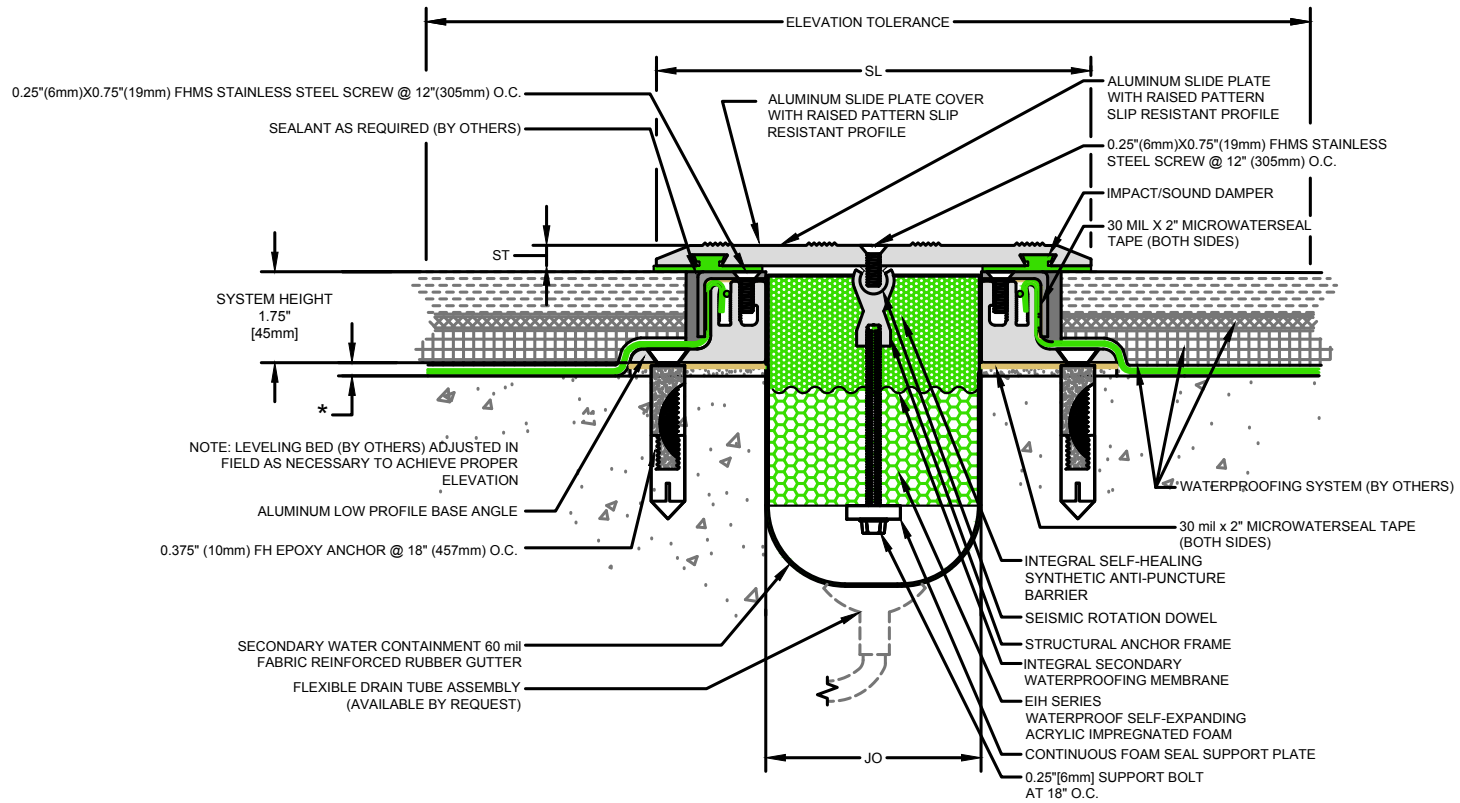
Dimension shown in inches (bold) and millimeters. JO = Joint Opening. SL = Sight Line. Color Options for rubber seals are Black or Special Order Gray.

**Safety Max.** - Safety Margin Movement capacity accommodates concrete shrinkage, vertical deflection and unexpected movement.

**Waterproofing Membrane Compatibility** conform with membrane manufacturer grade of rubber to be used on waterproofing splice flap.

**Elevation Tolerance**- Surface areas two feet on each side of the expansion joint opening shall have identical elevations creating flush slab-to-slab transition.

See drawing 40075-07 for SSD-800LP through 1200LP.



**SSD-LP Series Expansion Joint**  
(Slab-to-Slab)



50 MM WAY  
PENDERGRASS, GA. 30567  
706-824-7500 PHONE  
866-506-6929 TOLL FREE  
FAX: 706-824-7501 FAX

[www.mm-usa.com](http://www.mm-usa.com)

For Spec-Data, Install Guides and other data visit [www.mm-usa.com](http://www.mm-usa.com)

**RIGHTS OF DESIGN**

All rights of design, detail, engineering and/or invention contained herein are the property of MM Systems Corporation and hereby reserved and are not to be reproduced or provided to any other party. MM Systems Corporation reserves the right to amend or withdraw any information contained herein without notice and will not be liable for any inaccuracy or ambiguity of said information.

**Split Slab Dual Seismic Foam Seal Expansion Joint**

SSD-400 through 700 Low Profile (LP) Series

Drawn by: DMW	Scale: NTS	Drawing Number: <b>40075-05</b>
SHT. 1 OF 4	Issue Date: 06-23-2017	

Model Number	Nominal (JO <sub>N</sub> )		Nominal (SL <sub>N</sub> )		Thermal Movement (JO <sub>T</sub> )				Seismic Movement (JO <sub>S</sub> )				Total (JO <sub>A</sub> )		Slide Plate	
	Minimum	Maximum	Minimum	Maximum	Minimum	Maximum	Minimum	Maximum	Minimum	Maximum	Minimum	Maximum	Thickness (ST)			
SSD-400	<b>4.00</b>	102	<b>8.00</b>	203	<b>2.00</b>	51	<b>6.00</b>	152	<b>1.33</b>	34	<b>6.00</b>	152	<b>4.67</b>	119	<b>0.375</b>	10
SSD-500	<b>5.00</b>	127	<b>11.00</b>	279	<b>2.50</b>	64	<b>7.50</b>	191	<b>1.67</b>	42	<b>7.50</b>	191	<b>5.83</b>	148	<b>0.375</b>	10
SSD-600	<b>6.00</b>	152	<b>11.00</b>	279	<b>3.00</b>	76	<b>9.00</b>	229	<b>2.00</b>	51	<b>9.00</b>	229	<b>7.00</b>	178	<b>0.375</b>	10
SSD-700	<b>7.00</b>	178	<b>14.00</b>	356	<b>3.50</b>	89	<b>10.50</b>	267	<b>2.33</b>	59	<b>10.50</b>	267	<b>8.17</b>	208	<b>0.375</b>	10

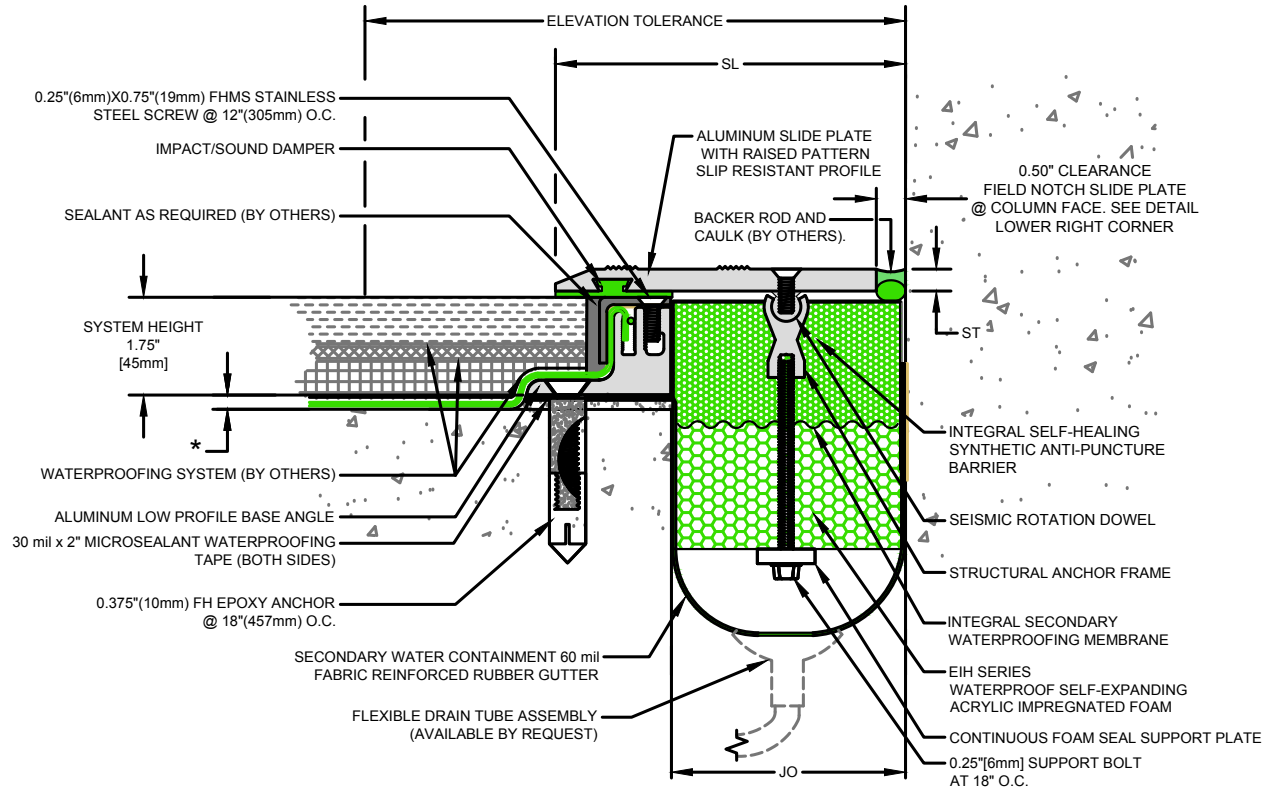
Dimension shown in inches (bold) and millimeters. JO = Joint Opening. SL = Sight Line. Color Options for rubber seals are Black or Special Order Gray.

**Safety Max.**- Safety Margin Movement capacity accommodates concrete shrinkage, vertical deflection and unexpected movement.

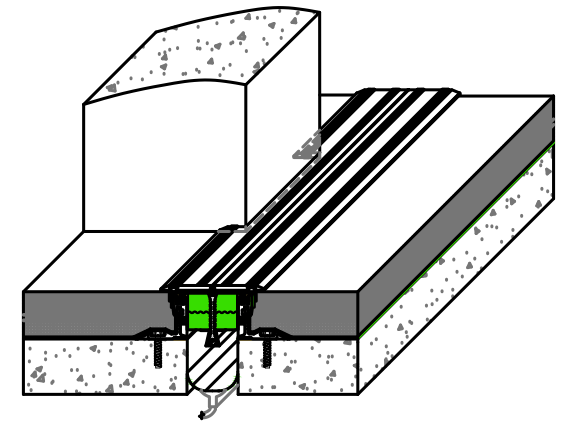
**Waterproofing Membrane Compatibility** confirm with membrane manufacturer grade of rubber to be used on waterproofing splice flap.

**Elevation Tolerance**- Surface areas two feet on each side of the expansion joint opening shall have identical elevations creating flush slab-to-slab transition.

See drawing 40075-07 for SSD-800LP through 1200LP.



**SSD-C-LP Series Expansion Joint**  
(Slab-to-Column)



50 MM WAY  
PENDERGRASS, GA. 30567  
706-824-7500 PHONE  
866-506-6929 TOLL FREE  
FAX: 706-824-7501 FAX

[www.mm-usa.com](http://www.mm-usa.com)

For Spec-Data, Install Guides and other data visit [www.mm-usa.com](http://www.mm-usa.com)

**RIGHTS OF DESIGN**

All rights of design, detail, engineering and/or invention contained herein are the property of MM Systems Corporation and hereby reserved and are not to be reproduced or provided to any other party. MM Systems Corporation reserves the right to amend or withdraw any information contained herein without notice and will not be liable for any inaccuracy or ambiguity of said information.

**Split Slab Dual Seismic Foam Seal Expansion Joint**

SSD-C-400 through 700 Low Profile (LP) Series

Drawn by:

DMW

Scale:

NTS

Drawing Number:

SHT. 2 OF 4

Issue Date:

06-23-2017

**40075-05**

Model Number	Nominal (JO <sub>N</sub> )		Nominal (SL <sub>N</sub> )		Thermal Movement (JO <sub>T</sub> )				Seismic Movement (JO <sub>S</sub> )				Total (JO <sub>T</sub> )		Slide Plate Thickness (ST)	
	Minimum	Maximum	Minimum	Maximum	Minimum	Maximum	Minimum	Maximum	Minimum	Maximum	Minimum	Maximum	Minimum	Maximum	Minimum	Maximum
SSD-400	<b>4.00</b>	102	<b>8.00</b>	203	<b>2.00</b>	51	<b>6.00</b>	152	<b>1.33</b>	34	<b>6.00</b>	152	<b>4.67</b>	119	<b>0.375</b>	10
SSD-500	<b>5.00</b>	127	<b>11.00</b>	279	<b>2.50</b>	64	<b>7.50</b>	191	<b>1.67</b>	42	<b>7.50</b>	191	<b>5.83</b>	148	<b>0.375</b>	10
SSD-600	<b>6.00</b>	152	<b>11.00</b>	279	<b>3.00</b>	76	<b>9.00</b>	229	<b>2.00</b>	51	<b>9.00</b>	229	<b>7.00</b>	178	<b>0.375</b>	10
SSD-700	<b>7.00</b>	178	<b>14.00</b>	356	<b>3.50</b>	89	<b>10.50</b>	267	<b>2.33</b>	59	<b>10.50</b>	267	<b>8.17</b>	208	<b>0.375</b>	10

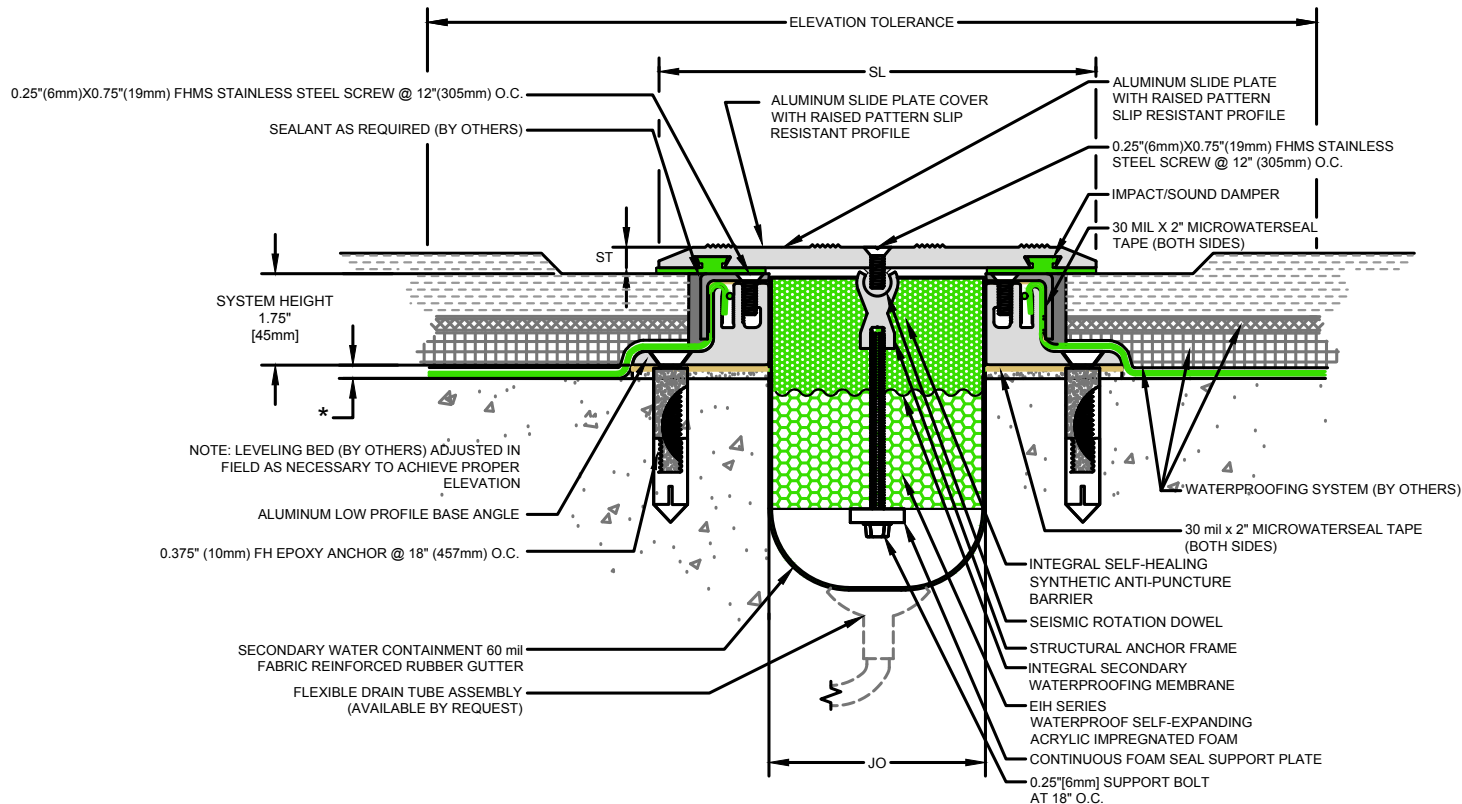
Dimension shown in inches (bold) and millimeters. JO = Joint Opening. SL = Sight Line. Color Options for rubber seals are Black or Special Order Gray.

**Safety Max.** - Safety Margin Movement capacity accommodates concrete shrinkage, vertical deflection and unexpected movement.

**Waterproofing Membrane Compatibility** conform with membrane manufacturer grade of rubber to be used on waterproofing splice flap.

**Elevation Tolerance** - Surface areas two feet on each side of the expansion joint opening shall have identical elevations creating flush slab-to-slab transition.

See drawing 40075-07 for SSD-800LP through 1200LP.



### SSD-LP Recessed Series Expansion Joint

(Slab-to-Slab)



50 MM WAY  
PENDERGRASS, GA. 30567  
706-824-7500 PHONE  
866-506-6929 TOLL FREE  
FAX: 706-824-7501 FAX

[www.mm-usa.com](http://www.mm-usa.com)

For Spec-Data, Install Guides and other data visit [www.mm-usa.com](http://www.mm-usa.com)

#### RIGHTS OF DESIGN

All rights of design, detail, engineering and/or invention contained herein are the property of MM Systems Corporation and hereby reserved and are not to be reproduced or provided to any other party. MM Systems Corporation reserves the right to amend or withdraw any information contained herein without notice and will not be liable for any inaccuracy or ambiguity of said information.

#### Split Slab Dual Seismic Foam Seal Expansion Joint

SSD-400 through 700 Low Profile (LP) Recessed Series

Drawn by:  
DMW

SHT. 3 OF 4

Scale:  
NTS

Issue Date:  
06-23-2017

Drawing Number:

**40075-05**

Model Number	Nominal (JO <sub>N</sub> )		Nominal (SL <sub>N</sub> )		Thermal Movement (JO <sub>T</sub> )				Seismic Movement (JO <sub>S</sub> )				Total (JO <sub>A</sub> )		Slide Plate Thickness (ST)	
	Minimum	Maximum	Minimum	Maximum	Minimum	Maximum	Minimum	Maximum	Minimum	Maximum	Minimum	Maximum	Minimum	Maximum	Minimum	Maximum
SSD-400	<b>4.00</b>	102	<b>8.00</b>	203	<b>2.00</b>	51	<b>6.00</b>	152	<b>1.33</b>	34	<b>6.00</b>	152	<b>4.67</b>	119	<b>0.375</b>	10
SSD-500	<b>5.00</b>	127	<b>11.00</b>	279	<b>2.50</b>	64	<b>7.50</b>	191	<b>1.67</b>	42	<b>7.50</b>	191	<b>5.83</b>	148	<b>0.375</b>	10
SSD-600	<b>6.00</b>	152	<b>11.00</b>	279	<b>3.00</b>	76	<b>9.00</b>	229	<b>2.00</b>	51	<b>9.00</b>	229	<b>7.00</b>	178	<b>0.375</b>	10
SSD-700	<b>7.00</b>	178	<b>14.00</b>	356	<b>3.50</b>	89	<b>10.50</b>	267	<b>2.33</b>	59	<b>10.50</b>	267	<b>8.17</b>	208	<b>0.375</b>	10

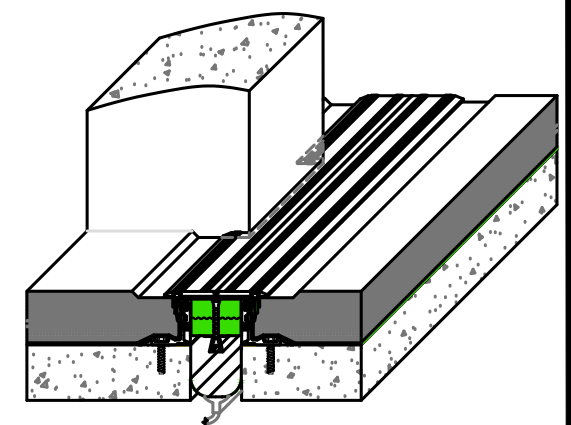
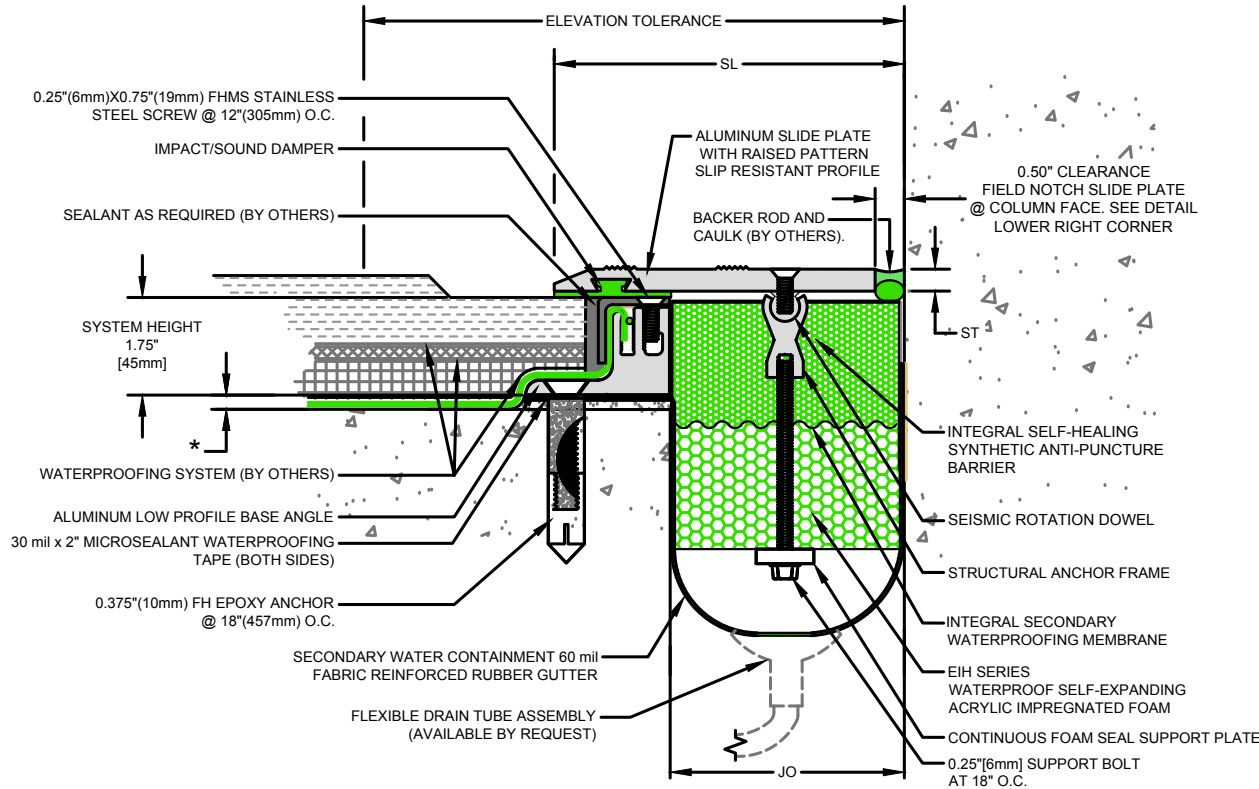
Dimension shown in inches (bold) and millimeters. JO = Joint Opening, SL = Sight Line. Color Options for rubber seals are Black or Special Order Gray.

**Safety Max.** - Safety Margin Movement capacity accommodates concrete shrinkage, vertical deflection and unexpected movement.

**Waterproofing Membrane Compatibility** conform with membrane manufacturer grade of rubber to be used on waterproofing splice flap.

**Elevation Tolerance** - Surface areas two feet on each side of the expansion joint opening shall have identical elevations creating flush slab-to-slab transition.

See drawing 40075-07 for SSD-800LP through 1200LP.



## SSD-C-LP Recessed Series Expansion Joint

(Slab-to-Column)



50 MM WAY  
PENDERGRASS, GA. 30567  
706-824-7500 PHONE  
866-506-6929 TOLL FREE  
FAX: 706-824-7501 FAX

[www.mm-usa.com](http://www.mm-usa.com)

For Spec-Data, Install Guides and other data visit [www.mm-usa.com](http://www.mm-usa.com)

### RIGHTS OF DESIGN

All rights of design, detail, engineering and/or invention contained herein are the property of MM Systems Corporation and hereby reserved and are not to be reproduced or provided to any other party. MM Systems Corporation reserves the right to amend or withdraw any information contained herein without notice and will not be liable for any inaccuracy or ambiguity of said information.

### Split Slab Dual Seismic Foam Seal Expansion Joint

SSD-400 through 700 Low Profile (LP) Recessed Series

Drawn by:

DMW

Scale:

NTS

Drawing Number:

SHT. 4 OF 4

Issue Date:  
06-23-2017

**40075-05**