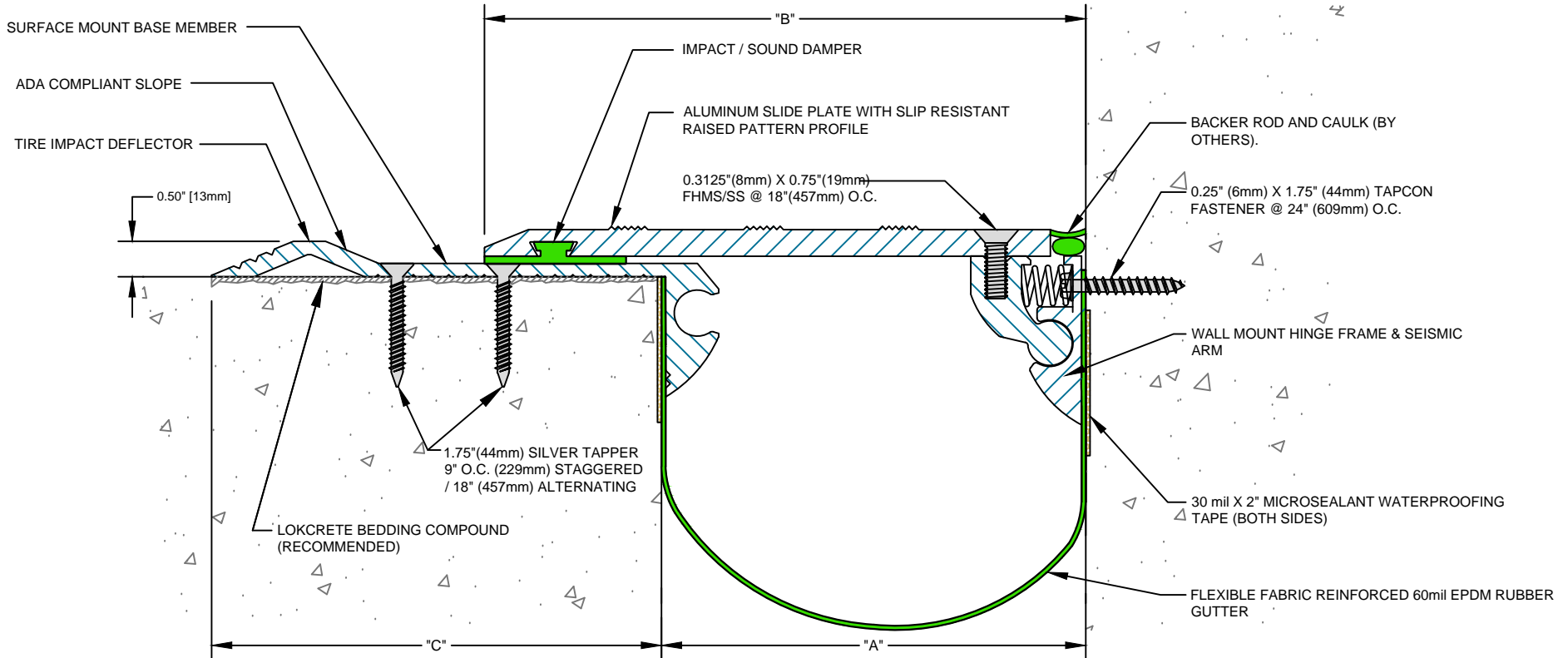


Model Number	Total Movement		Joint Opening "A"						Slide Plate "B"		Base Member "C"			
			Seismic Min.		Thermal Min.		Nominal		Seismic Max.					
SMS-C-400	2.5	89	2.5	64	2.5	64	4.0	102	5.0	127	6.0	152	6.375	162
SMS-C-600	5.0	127	2.5	64	3.0	76	6.0	152	7.5	191	8.5	216	6.375	162
SMS-C-800	7.5	191	2.5	64	4.0	102	8.0	203	10.0	254	11.0	279	8.375	213
SMS-C-1000	10.0	254	2.5	64	5.0	127	10.0	254	12.5	318	13.5	343	8.375	213
SMS-C-1200	12.5	318	2.5	64	6.0	152	12.0	305	15.0	381	16.0	406	8.375	213

Dimension shown in **inches** (bold) and millimeters. Contact MM Systems for other size systems.



SMS-C Series Expansion Joint
(Slab-to-Wall)



50 MM WAY
PENDERGRASS, GA. 30567
PHONE: 706-824-7500
866-506-6929
FAX: 706-824-7501

www.mm-usa.com

For Spec-Data, Installation Guides, or movement requirements, contact MMSC

RIGHTS OF DESIGN

All rights of design, detail, engineering and/or invention contained herein are the property of MM Systems Corporation and hereby reserved and are not to be reproduced or provided to any other party. MM Systems Corporation reserves the right to amend or withdraw any information contained herein without notice and will not be liable for any inaccuracy or ambiguity of said information.

Surface Mount Seismic Cover Expansion Joint

SMS-C Series

Drawn by: NDG	Scale: NTS	Drawing Number: 31100-02
SHT. 1 OF 1	Issue Date: 09-10-2013	