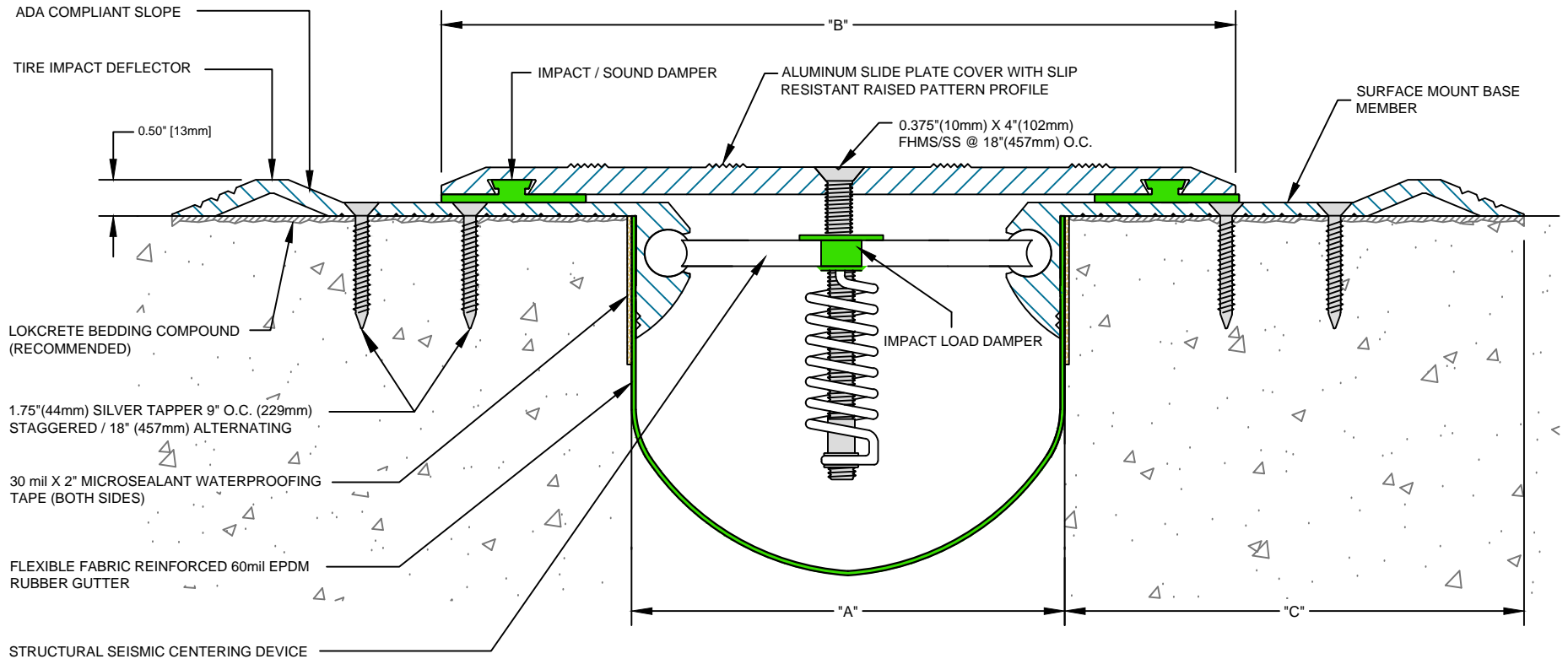


Model Number	Total Movement		Joint Opening "A"								Slide Plate "B"		Base Member "C"	
			Seismic Min.		Thermal Min.		Nominal		Seismic Max.					
SMS-400	<b>3.5</b>	89	<b>2.5</b>	64	<b>2.5</b>	64	<b>4.0</b>	102	<b>6.0</b>	152	<b>8.0</b>	203	<b>6.375</b>	162
SMS-600	<b>6.5</b>	165	<b>2.5</b>	64	<b>3.0</b>	76	<b>6.0</b>	152	<b>9.0</b>	229	<b>11.0</b>	279	<b>6.375</b>	162
SMS-800	<b>9.5</b>	241	<b>2.5</b>	64	<b>4.0</b>	102	<b>8.0</b>	203	<b>12.0</b>	305	<b>14.0</b>	356	<b>8.375</b>	213
SMS-1000	<b>12.5</b>	318	<b>2.5</b>	64	<b>5.0</b>	127	<b>10.0</b>	254	<b>15.0</b>	381	<b>17.0</b>	432	<b>8.375</b>	213
SMS-1200	<b>15.5</b>	395	<b>2.5</b>	64	<b>6.0</b>	152	<b>12.0</b>	305	<b>18.0</b>	457	<b>20.0</b>	508	<b>8.375</b>	213

Dimension shown in **inches** (bold) and millimeters. Contact MM Systems for other size systems.



**SMS Series Expansion Joint**  
(Slab-to-Slab)



50 MM WAY  
PENDERGRASS, GA. 30567  
PHONE: 706-824-7500  
866-506-6929  
FAX: 706-824-7501

[www.mm-usa.com](http://www.mm-usa.com)

For Spec-Data, Installation Guides, or movement requirements, contact MMSC

**RIGHTS OF DESIGN**

All rights of design, detail, engineering and/or invention contained herein are the property of MM Systems Corporation and hereby reserved and are not to be reproduced or provided to any other party. MM Systems Corporation reserves the right to amend or withdraw any information contained herein without notice and will not be liable for any inaccuracy or ambiguity of said information.

**Surface Mount Seismic Cover Expansion Joint**

**SMS Series**

Drawn by: NDG	Scale: NTS	Drawing Number: <b>31100-01</b>
SHT. 1 OF 1	Issue Date: 09-10-2013	