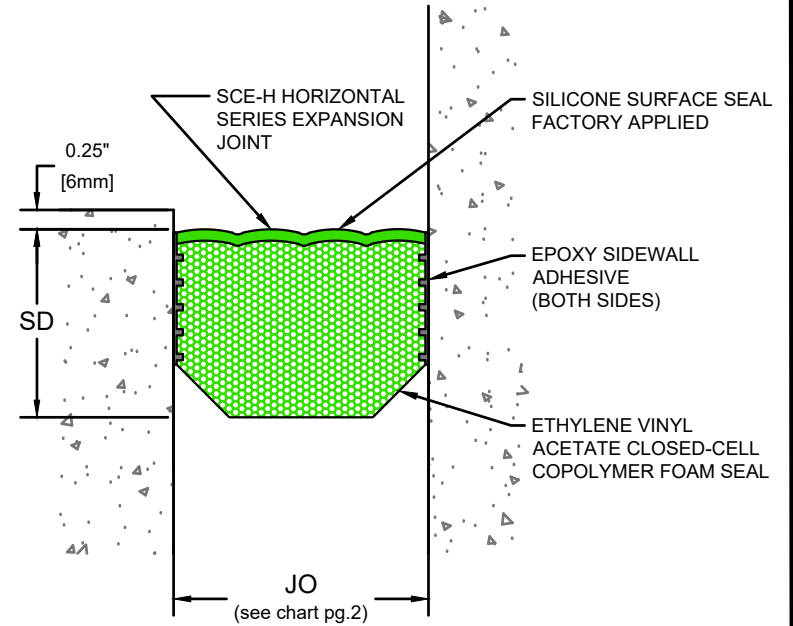


**SCE-H Horizontal Series
Expansion Joint
(Slab-to-Slab)**



**SCE-H Horizontal Series
Expansion Joint
(Slab-to-Wall)**



50 MM WAY
PENDERGRASS, GA. 30567
706-824-7500 PHONE
800-241-3460 TOLL FREE
706-824-7501 FAX

www.mm-usa.com

For Spec-Data, Install Guides and other data visit www.mm-usa.com

RIGHTS OF DESIGN

All rights of design, detail, engineering and/or invention contained herein are the property of MM Systems and hereby reserved and are not to be reproduced or provided to any other party. MM Systems reserves the right to amend or withdraw any information contained herein without notice and will not be liable for any inaccuracy or ambiguity of said information.

**Silicone Covered EVA Foam
SCE-H Horizontal Series**

Drawn by: MVP	Scale: NTS	Drawing Number:
Sheet: 1 OF 2	Issue Date: 05/27/2020	31225-01

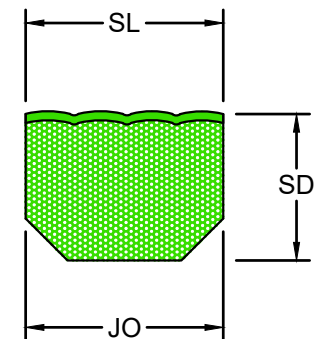
SCE-H SERIES EXPANSION JOINT MOVEMENT CHART

Model Number	Joint Opening (JO ^N)		Sight Line (SL ^N)		Thermal Movement (JO ^T)				Seismic Movement (JO ^S)				Installation Range (JO)				Total (JO ^A) Movement		Seal Depth (SD)	
	Nominal		Nominal		Minimum		Maximum		Minimum		Maximum		Minimum		Maximum		Movement			
SCE-H-100	1.00	25	1.00	25	0.400	10	1.250	32	0.400	10	1.250	32	1.00	25	1.250	32	0.85	22	1.50	38
SCE-H-150	1.50	38	1.50	38	0.600	15	1.875	48	0.600	15	1.875	48	1.50	38	1.875	48	1.28	33	1.50	38
SCE-H-200	2.00	51	2.00	51	0.800	20	2.500	64	0.800	20	2.500	64	2.00	51	2.500	64	1.70	43	3.00	76
SCE-H-250	2.50	64	2.50	64	1.000	25	3.125	79	1.000	25	3.125	79	2.50	64	3.125	79	2.13	54	3.00	76
SCE-H-300	3.00	76	3.00	76	1.200	30	3.750	95	1.200	30	3.750	95	3.00	76	3.750	95	2.55	65	3.00	76
SCE-H-350	3.50	89	3.50	89	1.400	36	4.375	111	1.400	36	4.375	111	3.50	89	4.375	111	2.98	76	3.00	76
SCE-H-400	4.00	102	4.00	102	1.600	41	5.000	127	1.600	41	5.000	127	4.00	102	5.000	127	3.40	86	3.00	76
SCE-H-450	4.50	114	4.50	114	1.800	46	5.625	143	1.800	46	5.625	143	4.50	114	5.625	143	3.83	97	3.00	76
SCE-H-500	5.00	127	5.00	127	2.000	51	6.250	159	2.000	51	6.250	159	5.00	127	6.250	159	4.25	108	3.00	76
SCE-H-550	5.50	140	5.50	140	2.200	56	6.875	175	2.200	56	6.875	175	5.50	140	6.875	175	4.68	119	3.00	76
SCE-H-600	6.00	152	6.00	152	2.400	61	7.500	191	2.400	61	7.500	191	6.00	152	7.500	191	5.10	130	4.50	114
SCE-H-650	6.50	165	6.50	165	2.600	66	8.125	206	2.600	66	8.125	206	6.50	165	8.125	206	5.53	140	4.50	114
SCE-H-700	7.00	178	7.00	178	2.800	71	8.750	222	2.800	71	8.750	222	7.00	178	8.750	222	5.95	151	4.50	114
SCE-H-750	7.50	191	7.50	191	3.000	76	9.375	238	3.000	76	9.375	238	7.50	191	9.375	238	6.38	162	4.50	114
SCE-H-800	8.00	203	8.00	203	3.200	81	10.000	254	3.200	81	10.000	254	8.00	203	10.000	254	6.80	173	4.50	114
SCE-H-850	8.50	216	8.50	216	3.400	86	10.625	270	3.400	86	10.625	270	8.50	216	10.625	270	7.23	184	6.00	152
SCE-H-900	9.00	229	9.00	229	3.600	91	11.250	286	3.600	91	11.250	286	9.00	229	11.250	286	7.65	194	6.00	152
SCE-H-950	9.50	241	9.50	241	3.800	97	11.875	302	3.800	97	11.875	302	9.50	241	11.875	302	8.08	205	6.00	152
SCE-H-1000	10.00	254	10.00	254	4.000	102	12.500	318	4.000	102	12.500	318	10.00	254	12.500	318	8.50	216	6.00	152
SCE-H-1050	10.50	267	10.50	267	4.200	107	13.125	333	4.200	107	13.125	333	10.50	267	13.125	333	8.93	227	6.00	152
SCE-H-1100	11.00	279	11.00	279	4.400	112	13.750	349	4.400	112	13.750	349	11.00	279	13.750	349	9.35	237	6.00	152
SCE-H-1150	11.50	292	11.50	292	4.600	117	14.375	365	4.600	117	14.375	365	11.50	292	14.375	365	9.78	248	6.00	152
SCE-H-1200	12.00	305	12.00	305	4.800	122	15.000	381	4.800	122	15.000	381	12.00	305	15.000	381	10.20	259	6.00	152

Dimension shown in **inches** (bold) and millimeters.

SCE-H Series seals compress 60% and expand 25% from the nominal dimension after installation.

IMPORTANT NOTE: If the actual concrete joint opening is less than the specified nominal dimension (this may occur in hot summer months) then the install will be difficult. Do not use a smaller seal size because it may not accommodate wider openings during cold winter months. Either wait for colder temperatures (joint opens) to install or contact MM Systems for alternate seal options.



50 MM WAY
PENDERGRASS, GA. 30567
706-824-7500 PHONE
800-241-3460 TOLL FREE
706-824-7501 FAX

www.mm-usa.com

For Spec-Data, Install Guides and other data visit www.mm-usa.com

RIGHTS OF DESIGN

All rights of design, detail, engineering and/or invention contained herein are the property of MM Systems and hereby reserved and are not to be reproduced or provided to any other party. MM Systems reserves the right to amend or withdraw any information contained herein without notice and will not be liable for any inaccuracy or ambiguity of said information.

Silicone Covered EVA Foam SCE-H Horizontal Series

Drawn by:
MVP

Scale:
NTS

Drawing Number:

Sheet: 2 OF 2

Issue Date:
05/27/2020

31225-02