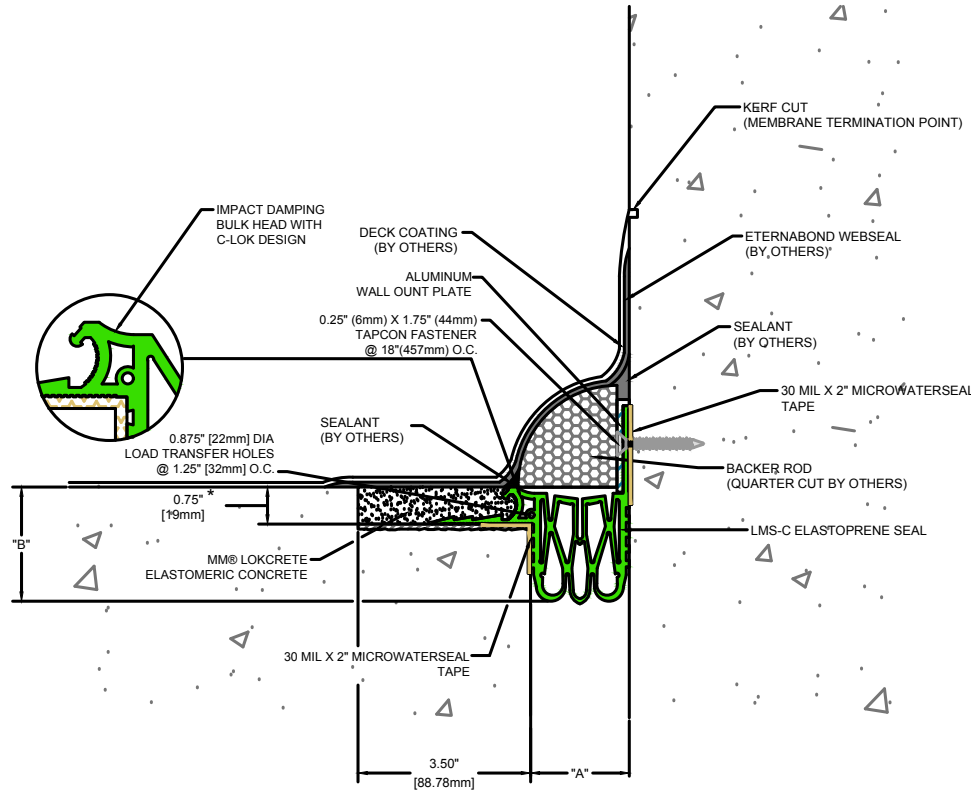


Model Number	Total Movement	Joint Opening "A"			Installation Range "A"		Depth "B"
		Minimum	Nominal	Maximum	Minimum	Maximum	
LMS-C-100	0.875 22	0.375 10	0.625 16	1.00 25	0.50 13	0.75 19	2.165 55
LMS-C-150	1.25 32	0.50 13	1.00 25	1.50 38	0.75 19	1.25 32	2.222 56
LMS-C-250	2.50 64	0.75 19	1.75 44	2.50 64	1.25 32	2.25 57	2.625 67
LMS-C-350	3.25 83	1.00 25	2.50 64	3.50 89	1.50 38	3.25 83	2.250 57
LMS-C-450HD	4.00 102	1.50 38	3.00 76	4.50 114	2.25 57	4.25 108	3.166 80
LMS-C-550HD	5.00 127	1.50 38	4.50 114	6.00 152	3.00 76	5.25 133	3.166 80

Dimensions shown in **inches** (bold) and millimeters. Color Options for LokCrete and Seal - Black or Special Order Gray

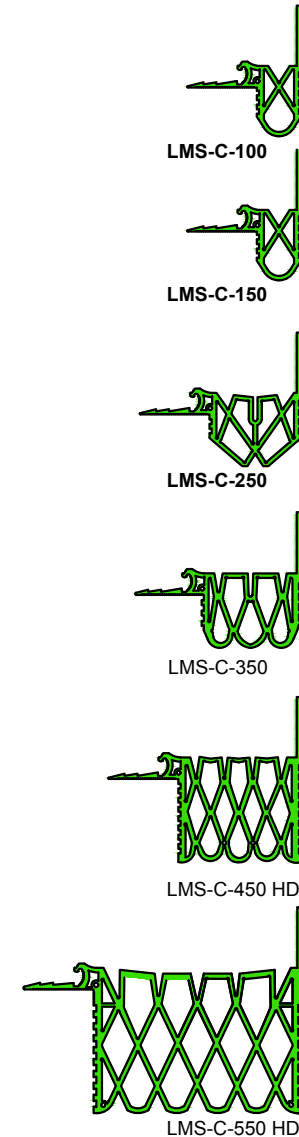
Safety Max. - Safety Margin Movement capacity accommodates concrete shrinkage, vertical deflection and unexpected movement.



* IMPORTANT DIMENSION - ACHEIVE REQUIRED DEPTH BY EXACT FORMING, GRINDING, MILLING OR LEVELING BED

LMS over Occupied Space
(Slab-to-Wall)

SEAL PROFILES



50 MM WAY
PENDERGRASS, GA. 30567
706-824-7500 PHONE
800-241-3460 TOLL FREE
706-824-7501 FAX

www.mm-usa.com

For Spec-Data, Install Guides and other data visit www.mm-usa.com

RIGHTS OF DESIGN

All rights of design, detail, engineering and/or invention contained herein are the property of MM Systems Corporation and hereby reserved and are not to be reproduced or provided to any other party. MM Systems Corporation reserves the right to amend or withdraw any information contained herein without notice and will not be liable for any inaccuracy or ambiguity of said information.

LokCrete Membrane System
LMS-C Over Occupied Space

Drawn by: DMW	Scale: NTS	Drawing Number: 30102-03
SHT. 1 OF 1	Issue Date: 06-07-2017	