

1/4 - 20 X 1/2" HHMS  
& 1/4 - 20 LOCKNUT  
@ 24" O.C.  
9509 & 9505

SLEEVE ANCHOR  
1/4" X 1 3/8" @ 24" O.C.  
9361

3"  
1/8" X 3"  
BRONZE PLATE

1/4 - 20 X 1 1/2" FHMS/SS  
@ 24" O.C.  
9371

FRAME

(163)

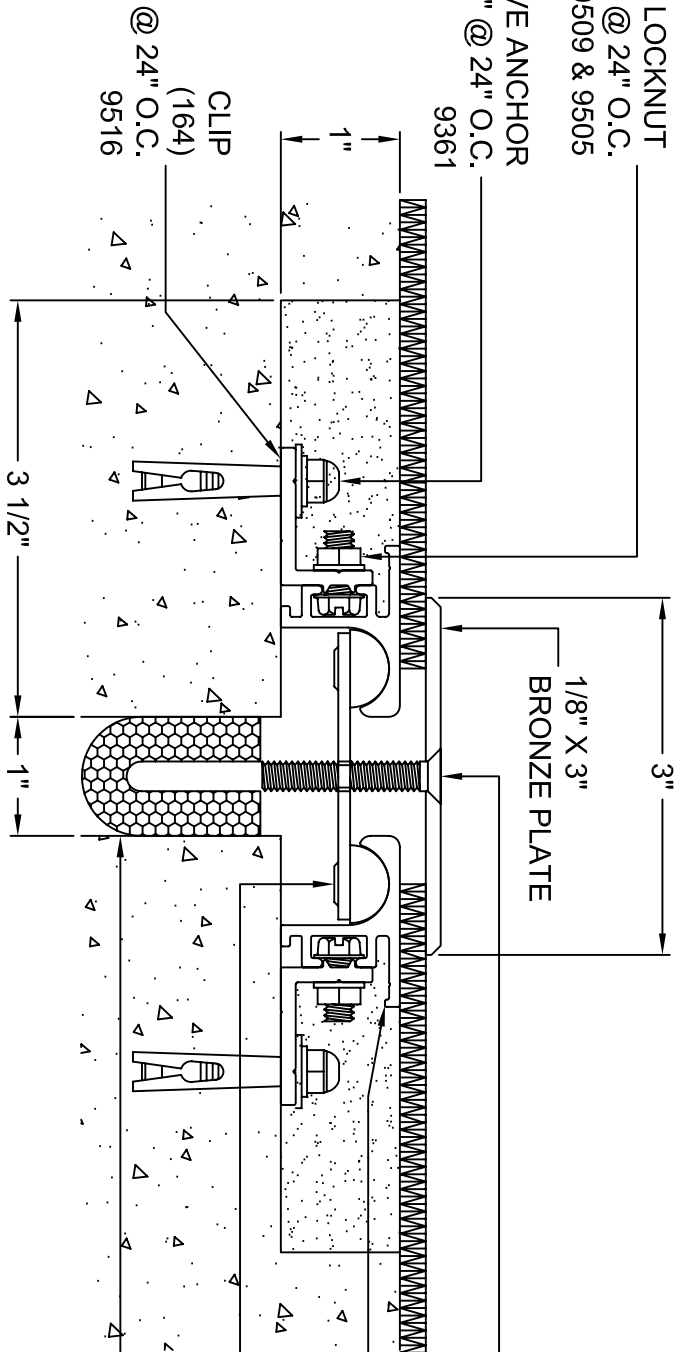
8935

4 1/2" TENSION BAR

@ 24" O.C.

9300

FIRE BARRIER  
(OPTIONAL)



CLIP  
(164)  
@ 24" O.C.  
9516

# LBSD -1 - 1

**ARCHITECT/CONTRACTOR NOTE:**  
ALL SUBASSEMBLY COMPONENTS TO BE PROVIDED IN 10'-0" OR 20'-0" STOCK LENGTHS UNLESS OTHERWISE NOTED. THE SPECIFIC SYSTEMS DICTATE THE LENGTHS PROVIDED.

Representative:	Customer:	Project:	Location:	Project Number:
-----------------	-----------	----------	-----------	-----------------



**MM**  
MM SYSTEMS

50 MM WAY  
PENDERGRASS, GA. 30567  
PHONE: 706-824-7500  
866-50 MM WAY  
866-506-6929  
FAX: 706-824-7501

www.50mmway.com

For Spec-Data, Installation Guides, or movement requirements, contact MM/SC

## RIGHTS OF DESIGN

All rights of design, detail, engineering and/or invention contained herein are the property of MM Systems Corporation and hereby reserved and are not to be reproduced or provided to any other party. MM Systems Corporation reserves the right to amend or withdraw any information contained herein without notice and will not be liable for any inaccuracy or ambiguity of said information.

# LBSD-1-1

Model:	Scale:	Drawing Number:
Drawn by:	NTS	
SHT. OF	Issue Date:	
	03/31/2004	