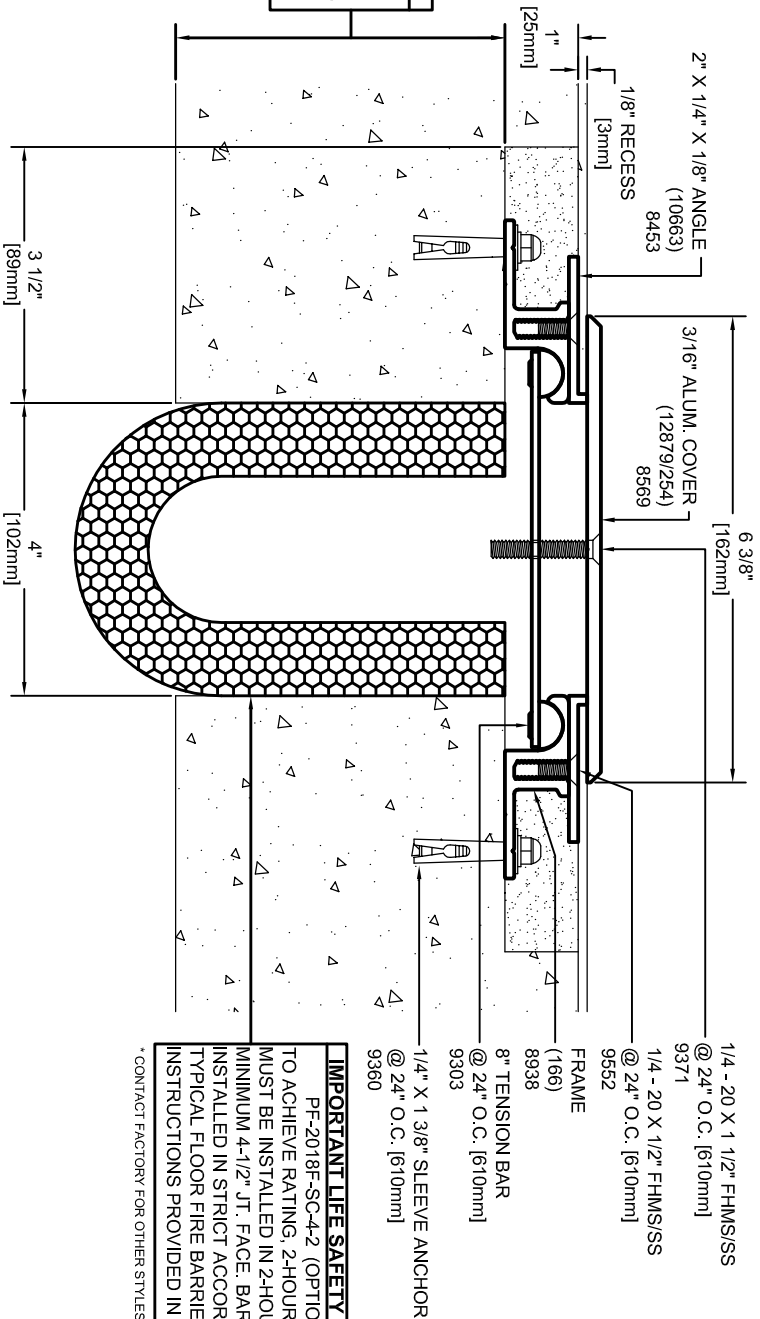


**IMPORTANT LIFE SAFETY NOTE**  
 4-1/2" MINIMUM FACE OF SLAB (AS SHOWN)  
 REQUIRED FOR OPTIONAL FIRE RATING TO  
 BE AVAILABLE IN ACCORDANCE TO IBC  
 TABLE 721.2.2.1 "MINIMUM SLAB THICKNESS"  
 ARCHITECT / CONTRACTOR MUST VERIFY  
 PRIOR TO FABRICATION.

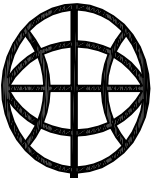


**IMPORTANT LIFE SAFETY PRODUCT NOTE**  
 PE-2018F-SC-4-2 (OPTIONAL)  
 TO ACHIEVE RATING, 2-HOUR FIRE BARRIER  
 MUST BE INSTALLED IN 2-HOUR RATED SLAB,  
 MINIMUM 4-1/2" JT. FACE BARRIERS MUST BE  
 INSTALLED IN STRICT ACCORDANCE WITH  
 TYPICAL FLOOR FIRE BARRIER INSTALLATION  
 INSTRUCTIONS PROVIDED IN THIS SUBMITTAL.  
 \* CONTACT FACTORY FOR OTHER STYLES OF FIRE BARRIER

Model	Nominal "JT"	Joint Opening "JT"			Total Movement	Mat. Code
		Seismic Min.	Thermal Min.	Thermal Max.		
LAST-4-2-.125H	4"	0.25"	3"	5"	6"	SF1913
LAST-4-2-.125H w/ PE-2018F-SC-4-2	4"	1.75"	3"	5"	6"	SF1913

**ARCHITECT/CONTRACTOR NOTE:**  
 ALL SUBASSEMBLY COMPONENTS TO BE  
 PROVIDED IN 10'-0" OR 20'-0" STOCK LENGTHS  
 UNLESS OTHERWISE NOTED. THE SPECIFIC  
 SYSTEMS DICTATE THE LENGTHS PROVIDED.

Representative: \_\_\_\_\_ Customer: \_\_\_\_\_ Project: \_\_\_\_\_ Location: \_\_\_\_\_ Project Number: \_\_\_\_\_



**MM**  
 MM SYSTEMS

50 MM WAY  
 PENDERGRASS, GA. 30567  
 PHONE: 706-824-7500  
 800-241-3460  
 FAX: 706-824-7501

www.mmssystemscorp.com

For Spec-Data, Installation Guides, or movement requirements, contact MMISC

**RIGHTS OF DESIGN**

All rights of design, detail, engineering and/or invention contained herein are the property of MM Systems Corporation and hereby reserved and are not to be reproduced or provided to any other party. MM Systems Corporation reserves the right to amend or withdraw any information contained herein without notice and will not be liable for any inaccuracy or ambiguity of said information.

Model:

**LAST-4-2-.125H**

Drawn by: LMP

Scale: NTS

Drawing Number:

SHT. OF

Issue Date: 06-08-10

**SF1913**