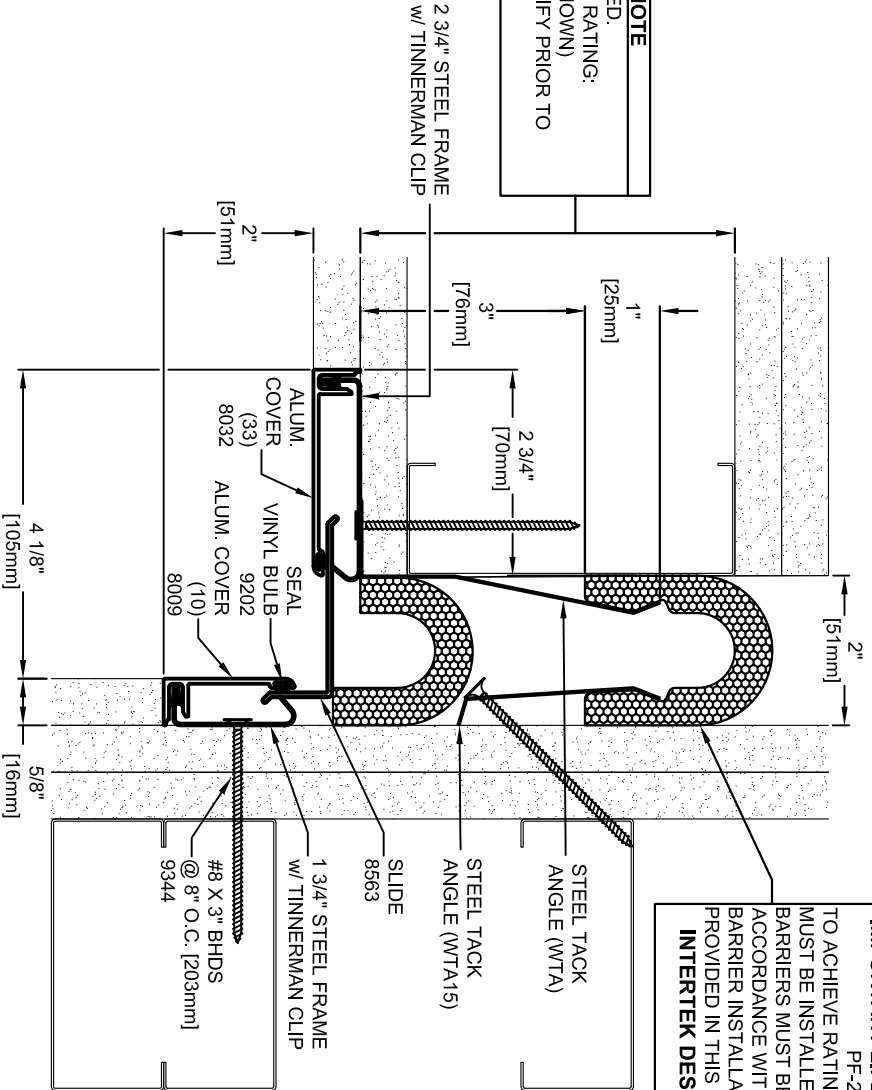


**IMPORTANT LIFE SAFETY NOTE**

NOTE 2 BARRIERS REQUIRED.  
 MINIMUM WALL DEPTH REQUIRED FOR RATING:  
 5" FOR SINGLE SIDE INSTALLATION (SHOWN)  
 ARCHITECT / CONTRACTOR MUST VERIFY PRIOR TO  
 FABRICATION



**IMPORTANT LIFE SAFETY PRODUCT NOTE**  
 PF-2018CW-SC-2-1  
 TO ACHIEVE RATING, 2-HOUR FIRE BARRIER  
 MUST BE INSTALLED IN 2-HOUR RATED WALL.  
 BARRIERS MUST BE INSTALLED IN STRICT  
 ACCORDANCE WITH TYPICAL WALL FIRE  
 BARRIER INSTALLATION INSTRUCTIONS  
 PROVIDED IN THIS SUBMITTAL.  
**INTERIEK DESIGN NO. MM/EJV 120-03**

Model	FX-L-2-1_STUD_2HWPF_SS	Normal	Joint Opening "JT"	Seismic Min.	Thermal Min.	Thermal Max.	Seismic Max.	Total Movement	Mat. Code
		"JT"	2"	.5"	1.50"	2.50"	2.5625"	2.0625"	EJMW1418

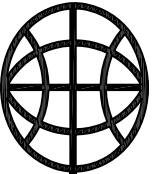
Representative:

Customer:

Project:

Location:

Project Number:



**MM**

MM SYSTEMS

50 MM WAY

PENDERGRASS, GA. 30567

PHONE: 706-824-7500

800-241-3460

FAX: 706-824-7501

www.mmssystemscorp.com

For Spec-Data, Installation Guides, or movement requirements, contact MMSC

**RIGHTS OF DESIGN**

All rights of design, detail, engineering and/or invention contained herein are the property of MM Systems Corporation and hereby reserved and are not to be reproduced or provided to any other party. MM Systems Corporation reserves the right to amend or withdraw any information contained herein without notice and will not be liable for any inaccuracy or ambiguity of said information.

Model: **FX-L-2-1\_STUD\_2HWPF\_SS**

Drawn by: BOO

Scale: NTS

Drawing Number:

SHT. OF

Issue Date: 08-24-15

**EJMW1418**