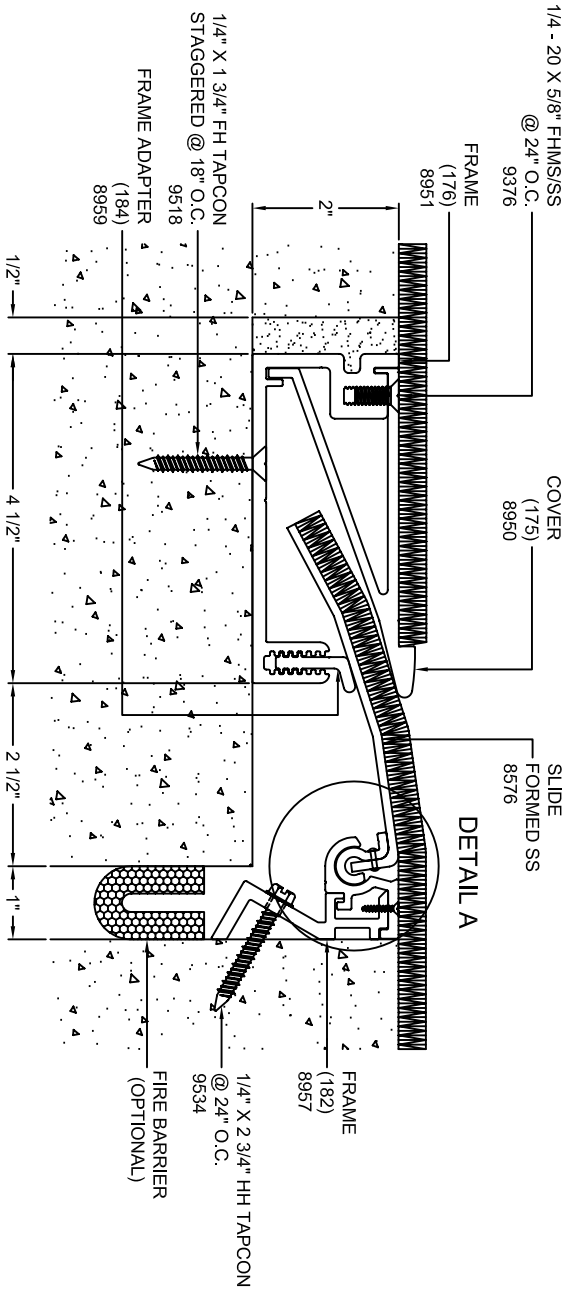


- DETAIL A
- 10 - 24 X 1/2" FH SELF-TAPPING @ 24" O.C. 9535
- PIVOT ADAPTER (180) 8955
- HINGE (236) 8977
- POP-RIVET @ 12" O.C. 9536



- 1/4" - 20 X 5/8" FHMS/SS @ 24" O.C. 9376
- FRAME (176) 8951
- 1/4" X 1 3/4" FH TAPCON STAGGERED @ 18" O.C. 9518
- FRAME ADAPTER (184) 8959
- COVER (175) 8950
- SLIDE FORMED SS 8576
- FRAME (182) 8957
- 1/4" X 2 3/4" HH TAPCON @ 24" O.C. 9534

HSLN 1-1

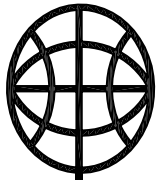
(FOR 3/8" CARPET THICKNESS)

ARCHITECT/CONTRACTOR NOTE:
 ALL SUBASSEMBLY COMPONENTS TO BE PROVIDED IN 10'-0" OR 20'-0" STOCK LENGTHS UNLESS OTHERWISE NOTED. THE SPECIFIC SYSTEMS DICTATE THE LENGTHS PROVIDED.

Representative:	Customer:	Project:	Location:	Project Number:
-----------------	-----------	----------	-----------	-----------------

RIGHTS OF DESIGN

All rights of design, detail, engineering and/or invention contained herein are the property of MM Systems Corporation and hereby reserved and are not to be reproduced or provided to any other party. MM Systems Corporation reserves the right to amend or withdraw any information contained herein without notice and will not be liable for any inaccuracy or ambiguity of said information.



MM
MM SYSTEMS

50 MM WAY
 PENDERGRASS, GA. 30567
 PHONE: 706-824-7500
 866-50 MM WAY
 866-506-6929
 FAX: 706-824-7501

www.50mmway.com

For Spec-Data, Installation Guides, or movement requirements, contact MM/SC

HSLN 1-1-3/8

Model:	Scale:	Drawing Number:
Drawn by:	NTS	
SHT. OF	Issue Date:	
	01/28/2004	