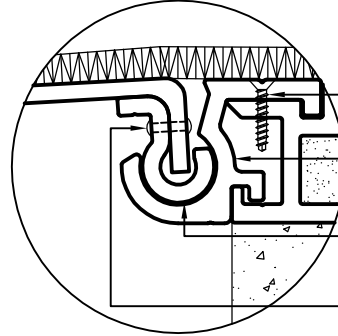
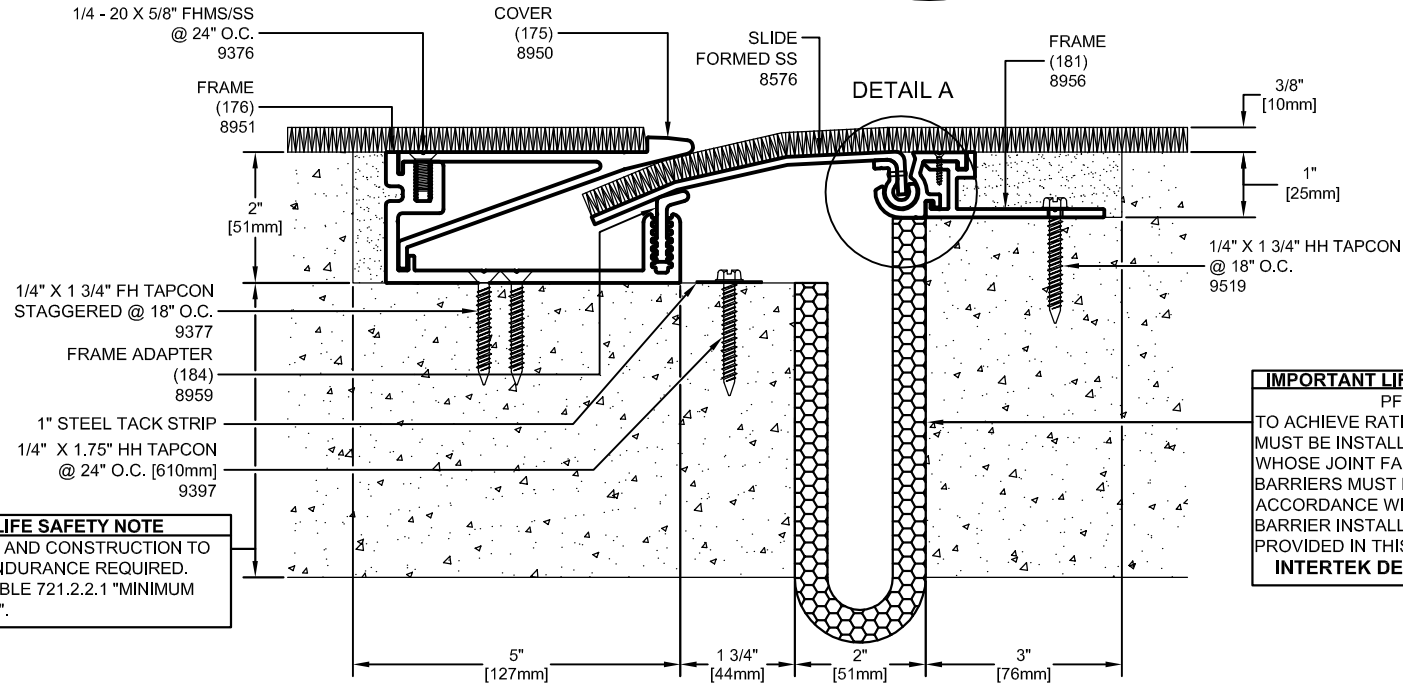


DETAIL A



- 10 - 24 X 1/2" FH SELF-TAPPING @ 24" O.C. 9535
- PIVOT ADAPTER (180) 8955
- HINGE (236) 8977
- POP-RIVET @ 12" O.C. 9536




**IMPORTANT LIFE SAFETY PRODUCT NOTE**  
 PF-2018F-SC-2-1  
 TO ACHIEVE RATING, 2-HOUR FIRE BARRIER MUST BE INSTALLED IN THE JOINT OPENING WHOSE JOINT FACE IS RATED FOR 2-HOUR. BARRIERS MUST BE INSTALLED IN STRICT ACCORDANCE WITH TYPICAL FLOOR FIRE BARRIER INSTALLATION INSTRUCTIONS PROVIDED IN THIS SUBMITTAL.  
**INTERTEK DESIGN NO. MM/EJH 120-01**

**IMPORTANT LIFE SAFETY NOTE**  
 SLAB THICKNESS AND CONSTRUCTION TO MEET HOURLY ENDURANCE REQUIRED. REFER TO IBC TABLE 721.2.2.1 "MINIMUM SLAB THICKNESS".

Model	Nominal "JT"	Joint Opening "JT"				Total Movement	Mat. Code
		Seismic Min.	Thermal Min.	Thermal Max.	Seismic Max.		
HSL-2-1_.375	2"	1"	1.5"	2.5"	3"	2"	HS1003
HSL-2-1_.375 w/ PF-2018F-SC-2-1	2"	1"	1.5"	2.5"	3"	2"	

( FOR 3/8" CARPET THICKNESS SHOWN )

Representative:	Customer:	Project:	Location:	Project Number:
-----------------	-----------	----------	-----------	-----------------



**MM**  
 MM SYSTEMS  
 50 MM WAY  
 PENDERGRASS, GA. 30567  
 PHONE: 706-824-7500  
 800-241-3460  
 FAX: 706-824-7501  
[www.mmsystemscorp.com](http://www.mmsystemscorp.com)

For Spec-Data, Installation Guides, or movement requirements, contact MMSC

**RIGHTS OF DESIGN**  
 All rights of design, detail, engineering and/or invention contained herein are the property of MM Systems Corporation and hereby reserved and are not to be reproduced or provided to any other party. MM Systems Corporation reserves the right to amend or withdraw any information contained herein without notice and will not be liable for any inaccuracy or ambiguity of said information.

HSL-2-1\_.375

Model:	HSL-2-1_.375	Scale:	NTS
Drawn by:	BOO	Issue Date:	01-15-16
SHT. . OF .		HS1003	