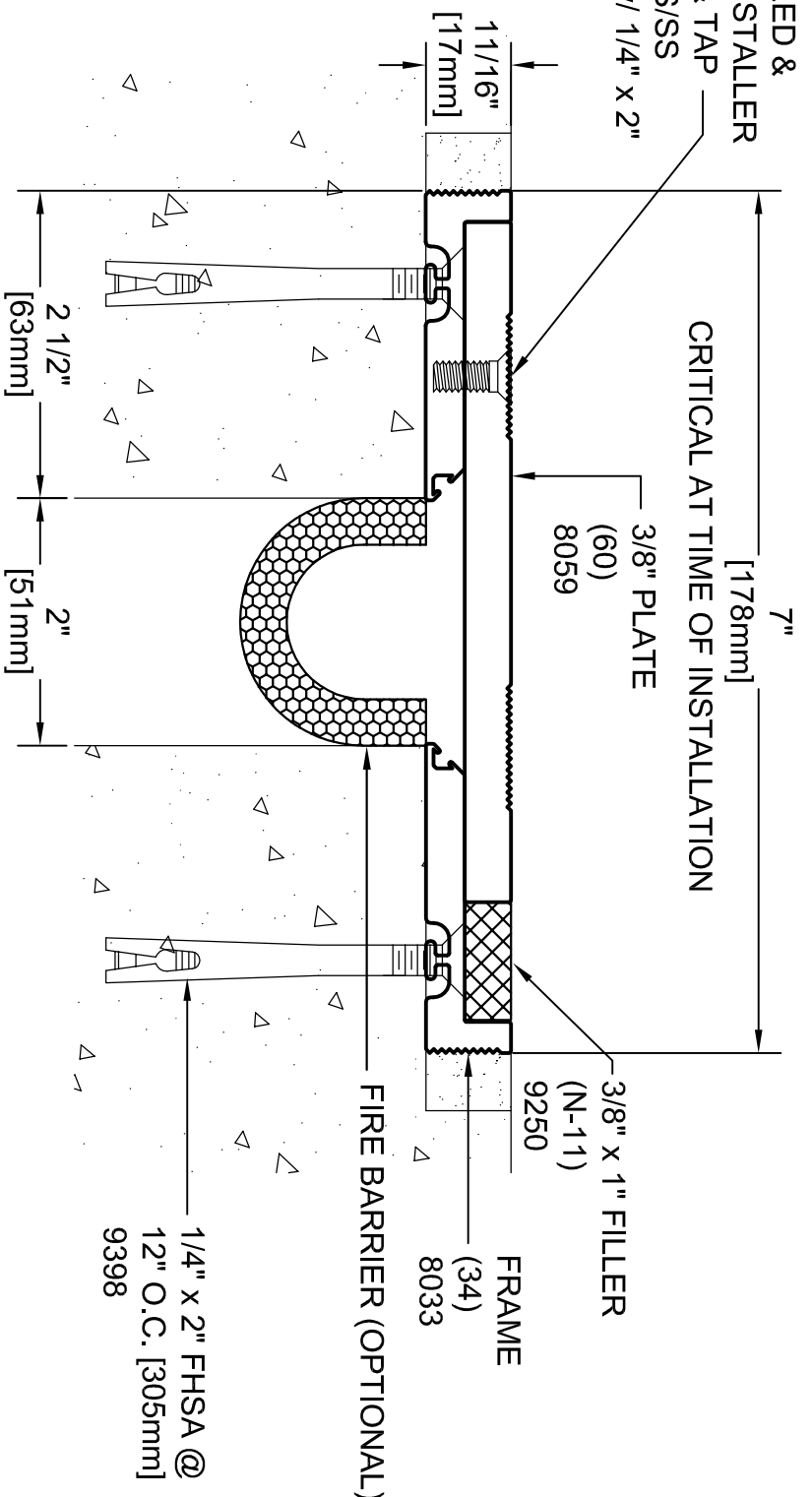


PLATES PRE-DRILLED & COUNTERSUNK. INSTALLER TO MATCH-DRILL & TAP #1/4-20 X 5/8" FHMS/SS (9369), STAGGER W/ 1/4" X 2" FHSA

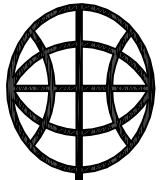


Model	Nominal "JT"	Joint Opening "JT"			Total Movement	Mat. Code
		Seismic Min.	Thermal Min.	Thermal Max.		
XPD-2-1	2"	1"	1.9375"	2.5"	2"	HD2302
XPD-2-1 w/ PF-2018F-SC-2-1	2"	1"	1.9375"	2.5"	3"	HD2302

NOTE THAT FILLER DISENGAGES AT SEISMIC MINIMUM

ARCHITECT/CONTRACTOR NOTE:
 ALL SUBASSEMBLY COMPONENTS TO BE PROVIDED IN 10'-0" OR 20'-0" STOCK LENGTHS UNLESS OTHERWISE NOTED. THE SPECIFIC SYSTEMS DICTATE THE LENGTHS PROVIDED.

Representative: _____ Customer: _____ Project: _____ Location: _____ Project Number: _____



MM
MM SYSTEMS

50 MM WAY
 PENDERGRASS, GA. 30567
 PHONE: 706-824-7500
 866-50 MM WAY
 866-506-6929
 FAX: 706-824-7501

www.mmsystemscorp.com

For Spec-Data, Installation Guides, or movement requirements, contact MMISC

RIGHTS OF DESIGN

All rights of design, detail, engineering and/or invention contained herein are the property of MM Systems Corporation and hereby reserved and are not to be reproduced or provided to any other party. MM Systems Corporation reserves the right to amend or withdraw any information contained herein without notice and will not be liable for any inaccuracy or ambiguity of said information.

XPD-2-1

Model: _____
 Drawn by: LMP
 Scale: NTS
 Issue Date: 07-21-10
 Drawing Number: **HD2302**