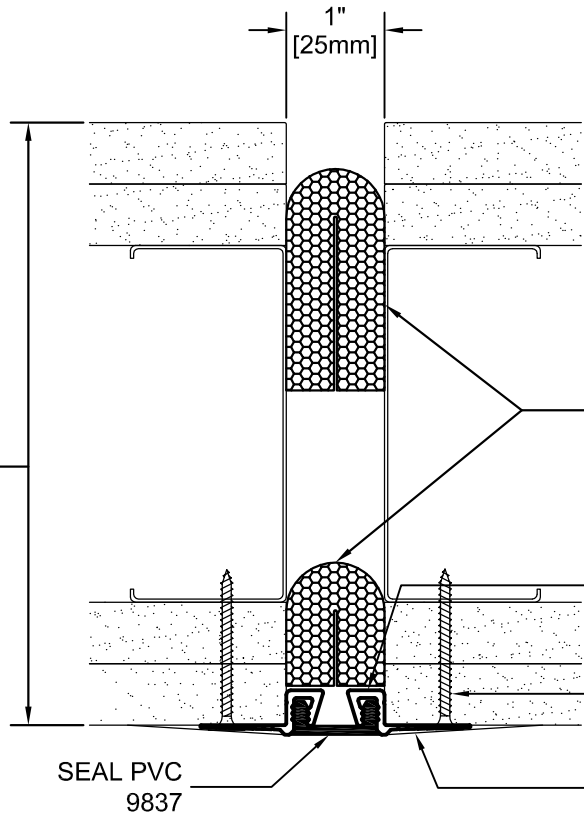


**IMPORTANT LIFE SAFETY NOTE**  
 NOTE 2 BARRIERS REQUIRED.  
 MINIMUM WALL DEPTH REQUIRED FOR RATING:  
 6.125" FOR SINGLE SIDE INSTALLATION (SHOWN)  
 ARCHITECT / CONTRACTOR MUST VERIFY PRIOR  
 TO FABRICATION



**IMPORTANT LIFE SAFETY PRODUCT NOTE**  
 PF-2018CW-SC-1-1  
 TO ACHIEVE RATING, 2-HOUR FIRE BARRIER  
 MUST BE INSTALLED IN 2-HOUR RATED WALL.  
 BARRIERS MUST BE INSTALLED IN STRICT  
 ACCORDANCE WITH TYPICAL WALL FIRE  
 BARRIER INSTALLATION INSTRUCTIONS  
 PROVIDED IN THIS SUBMITTAL.

ALUMINUM FRAME  
 (138)  
 8807  
 #6 X 2" BHDS  
 @ 24" O.C. [610mm]  
 9423  
 SEAL PVC  
 9837  
 JOINT COMPOUND  
 (BY OTHERS)

| Model                 | Nominal "JT" | Joint Opening "JT" |              |              |              | Total Movement | Mat. Code |
|-----------------------|--------------|--------------------|--------------|--------------|--------------|----------------|-----------|
|                       |              | Seismic Min.       | Thermal Min. | Thermal Max. | Seismic Max. |                |           |
| FSW-100_STUD_2HWPF_SS | 1"           | 0.875"             | 0.875"       | 1.1875"      | 1.3125"      | 0.4375"        |           |

\* NOTE THAT SEALS DISENGAGE FROM FRAME AFTER THERMAL MIN AND THERMAL MAX.

**ARCHITECT/CONTRACTOR NOTE:**  
 ALL SUBASSEMBLY COMPONENTS TO BE  
 PROVIDED IN 10'-0" OR 20'-0" STOCK LENGTHS  
 UNLESS OTHERWISE NOTED. THE SPECIFIC  
 SYSTEMS DICTATE THE LENGTHS PROVIDED.

Approved by: \_\_\_\_\_ Date: \_\_\_\_\_  
**SEAL NOTE: SPECIFY SEAL COLOR**  
 STANDARD COLORS:  
 CARBON (BLACK)     PRAIRIE (BEIGE)  
 FOG (GRAY)         LUNAR (WHITE)  
\*CUSTOM COLOR AVAILABLE IN MINIMUM QUANTITIES 100 LF.  
 CONTACT MM FOR PRICING & AVAILABILITY.

Representative: \_\_\_\_\_ Customer: \_\_\_\_\_ Project: \_\_\_\_\_ Location: \_\_\_\_\_ Project Number: \_\_\_\_\_

**MM SYSTEMS**  
 50 MM WAY  
 PENDERGRASS, GA. 30567  
 PHONE: 706-824-7500  
 800-241-3460  
 FAX: 706-824-7501  
[www.mmsystemscorp.com](http://www.mmsystemscorp.com)  
 For Spec-Data, Installation Guides, or movement requirements, contact MMSC

**RIGHTS OF DESIGN**  
 All rights of design, detail, engineering and/or invention contained herein are the property of MM Systems Corporation and hereby reserved and are not to be reproduced or provided to any other party. MM Systems Corporation reserves the right to amend or withdraw any information contained herein without notice and will not be liable for any inaccuracy or ambiguity of said information.

**FSW-100\_STUD\_2HWPF\_SS**  
 Model:  
 Drawn by: LMP    Scale: NTS    Drawing Number:  
 SHT. . OF .    Issue Date: 07-25-14