



Trench Grating / Access Covers

architectural grates | removeable access covers



FEATURES...

Architectural gratings come in a variety of widths, materials and surface treatments:

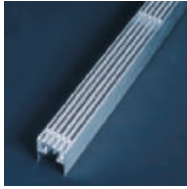
- Smooth or serrated tread options
- Abrasive color coatings available
- Aluminum or bronze alloys
- Optional liners
- Cast-in or block-out mount options
- ADA-compliant tread spacing
- Factory radii and miters available

Finishes



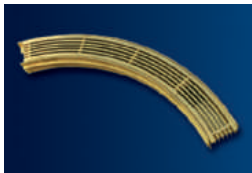
Mill (standard), anodized or custom color abrasive grit.

Metals



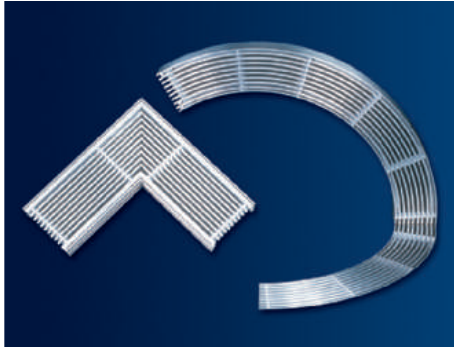
Aluminum (standard) or bronze.

Custom Shapes

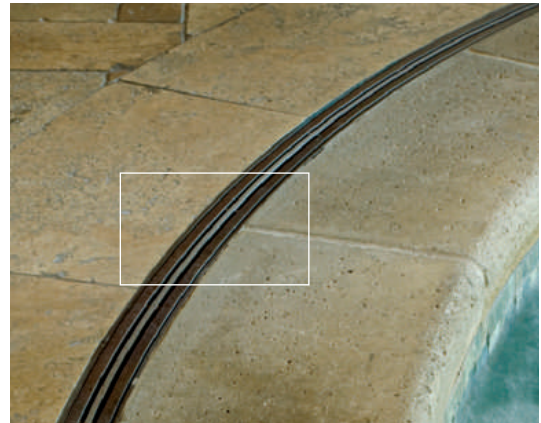


Contact MM Systems for custom shapes and configurations.

Factory radii and miters are just two of the custom configurations and options available with linear and pool gratings by MM Systems.



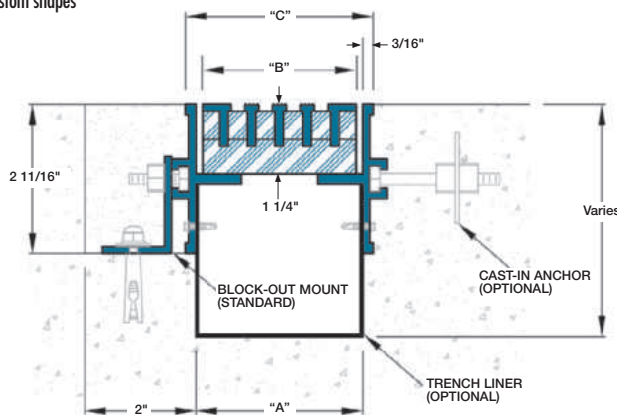
Pool gratings with liners from MM Systems are ideal at spas and swimming pools, or other moisture prone locations.



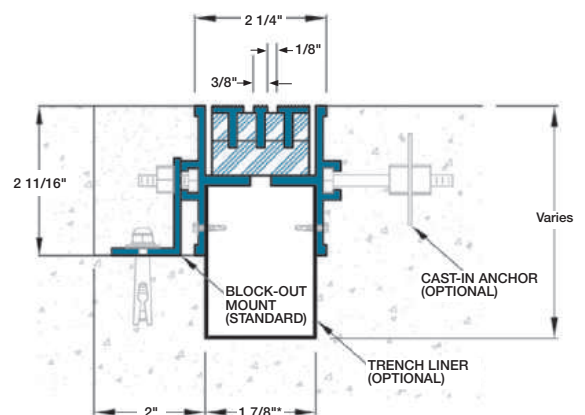
AGL SERIES SELECTION CHART							
TYPE	A		B		C		
AGL-400-(S,A,P)	4"	102	3³/₄"	95	4³/₈"	111	
AGL-600-(S,A,P)	6"	152	5³/₄"	146	6³/₈"	162	
AGL-800-(S,A,P)	8"	203	7³/₄"	197	8³/₈"	213	
AGL-1000-(S,A,P)	10"	254	9³/₄"	248	10³/₈"	264	
AGL-1200-(S,A,P)	12"	305	11³/₄"	298	12³/₈"	314	

S = SERRATED, A = ABRASIVE, P = PLAIN
Dimension shown in **inches** (bold) and millimeters.

Cover Photo and above:
The Cloisters
Sea Island, GA
Contractor: Turner Construction Company
Architect: Milton Pate Architects
System: Series ASG Pool Grating in Bronze



MODEL AGL
Linear Grating



*ADDITIONAL WIDTHS AVAILABLE

MODEL ASG
Pool Grating

FEATURES...

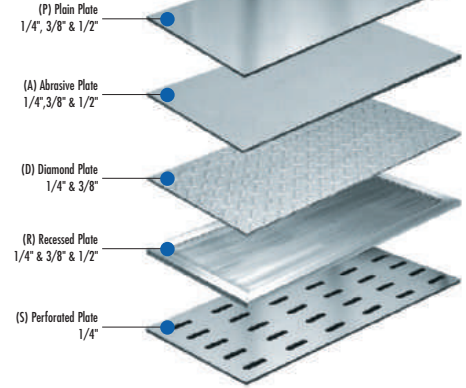
MM Access Cover systems provide both multiple and removable access points to electrical, refrigeration or other in-floor services.

- Easy access to in-floor services
- Wide selection of cover plate options
- Factory miters and transitions
- Recess options to accommodate various floor finishes
- Optional liners



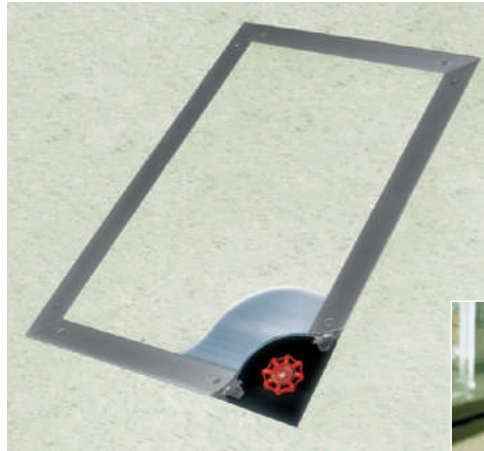
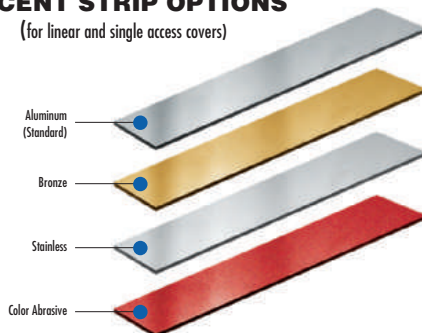
PLATE OPTIONS

(for linear and single access covers)

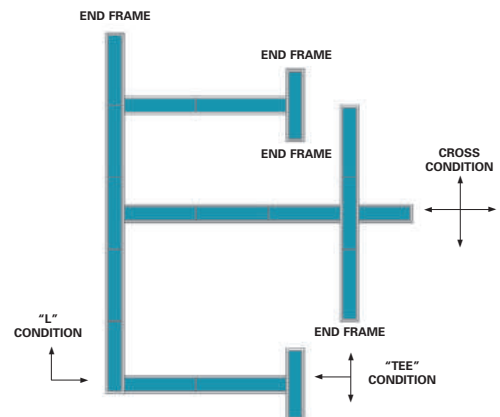
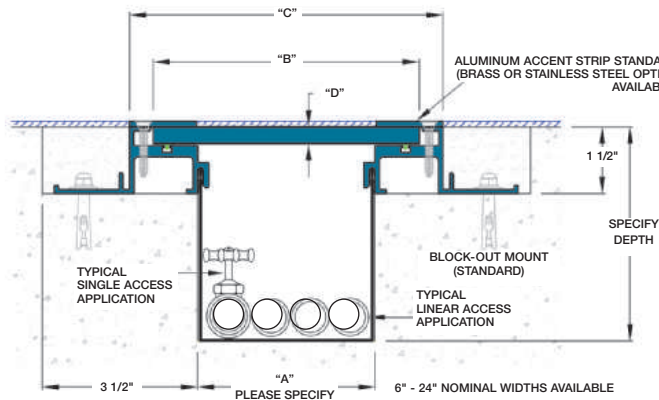


ACCENT STRIP OPTIONS

(for linear and single access covers)



FOR DIMENSION AND LOAD TABLES, VISIT
WWW.MM-TA.COM OR CALL 800-241-3460





Find *everything* you need on our web site...

www.mmsystemscorp.com



Expansion Joints / Architectural

Aesthetics, innovation and durability are the hallmark of MM's line of floor, wall, ceiling and roof joint cover systems. Engineered systems include features that are ADA compliant, fire-rated, no-bump and heavy-load designs capable of thermal, seismic and wind-sway movement.



Expansion Joints / Parking and Stadiums

High performance joint sealing systems designed to meet the rigorous demands of parking structures, stadiums and other open-air structures. Engineered options include systems that are waterproof, fire-rated, ADA compliant, and capable of thermal, shear and seismic movement.



Expansion Joints / Seismic

Engineered especially for new and retrofit base-isolated structures, seismically designed, code-compliant systems provide fire-rated passage between structures before, during and after seismic events. Engineered features include multi-directional movement capability including rotation in Z axis (vertical shear). Services include design/build and design assist.



Expansion Joints / Fire Rated / Safety

Fire barrier systems engineered and tested to current standards and code requirements. Ratings include 2, 3 and 4-hour endurance. Seismic fire barriers accommodate multi-directional movement including longitudinal shear. Vertical and horizontal systems include chase and plenum designs. Factory approved transitions insure continuity of rating throughout the structure.



Architectural Metalwork

Engineered and fabricated to exacting tolerances, architectural metalwork by MM is available in a variety of materials and finishes. Column covers, beam wraps, light coves, sun screens or your unique designs become signature elements of your project. Choose from unlimited Kynar 500® / Hylar 5000® color coatings.



Trench Grating and Access Covers

ADA compliant grating and trench cover systems. Decorative gratings offer an architectural alternative to traditional cast-iron gratings and are ideal for pool and plaza decks, green spaces and fountain surrounds. Removable access covers allow access to in-floor electrical and refrigeration services. Optional trench liners provide an exit path for moisture.



50 MM Way • P.O. Box 98 • Pendergrass, GA 30567
Toll Free: 800.241.3460
Tel: 706.824.7500 Fax: 706.824.7501

Direct Link to TA www.mm-ta.com
Web Site www.mmsystemscorp.com
Call Toll Free 800.241.3460

MM Systems reserves the right to amend or withdraw any product, design or information without notice and shall not be responsible or liable for any inaccuracy or ambiguity of any information contained herein

One or more of the following patents may cover products in this catalog: 3,624,973; Re27,761; 3,738,068; 3,862,531; Re 28,870; 3,974,609; 4,063,396; 4,156,993; 4,241,549; 4,271,651; 4,403,458; 4,404,777; 4,512,127; 4,545,162; 4,616,460; 4,625,485; 4,651,488; 4,674,252; 4,708,517; 4,743,036; 4,815,247; 4,916,878; 4,943,605; 4,965,976; 5,575,126; 5,706,611; 5,862,631; 5,867,944; 5,875,598; 5,950,378; D300,465; (Other Patents Pending)

© 2008 08/09